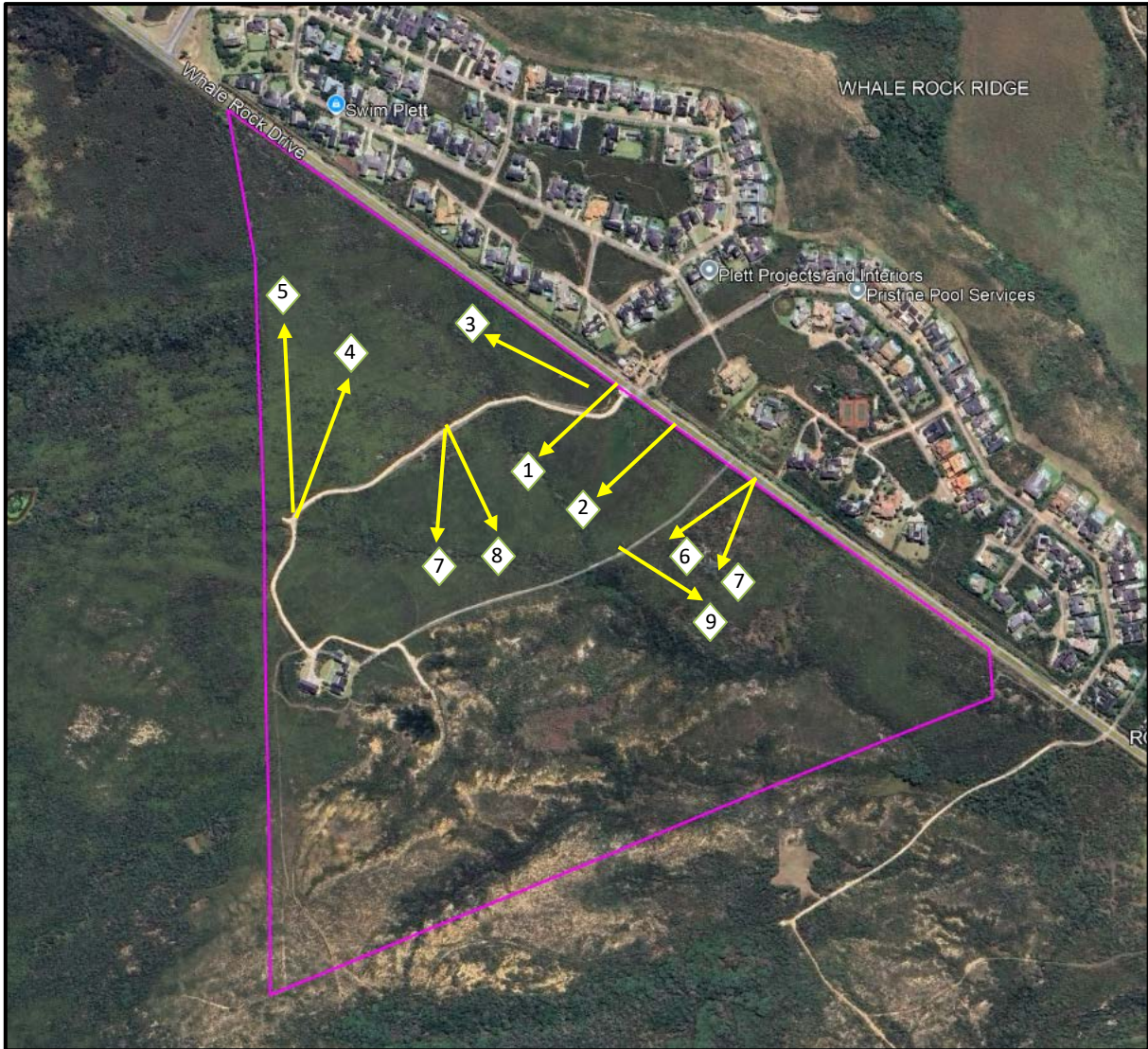


## APPENDIX C: PHOTO REPORT



**Figure 1: Aerial showing the position and direction of the following photos taken on 16 February 2026**



**Photo 1: Taken from across the road at the entrance to Portion 63, showing the existing house in the background and Portion 59 to the right**



**Photo 2: Taken from next to the road across Portion 63, showing Portion 59 to the right**



**Photo 3: Taken from the entrance gate, parallel to Whale Rock drive, showing the homogenous vegetation of Portion 59 in the background**



**Photo 4: Taken from access road running through Portion 63, showing Portion 59 in the background**



**Photo 5: Taken from access road running through Portion 63, showing the vegetation of Portion 59 in the foreground with some regrowth of alien invasive trees in the background**



**Photo 6: Taken from next to the road at the entrance to Portion 63, showing the existing house located on Portion 63 in the background**



**Photo 7: Taken from next to the road over Portion 63, showing the old quarry and archeological site in the background**



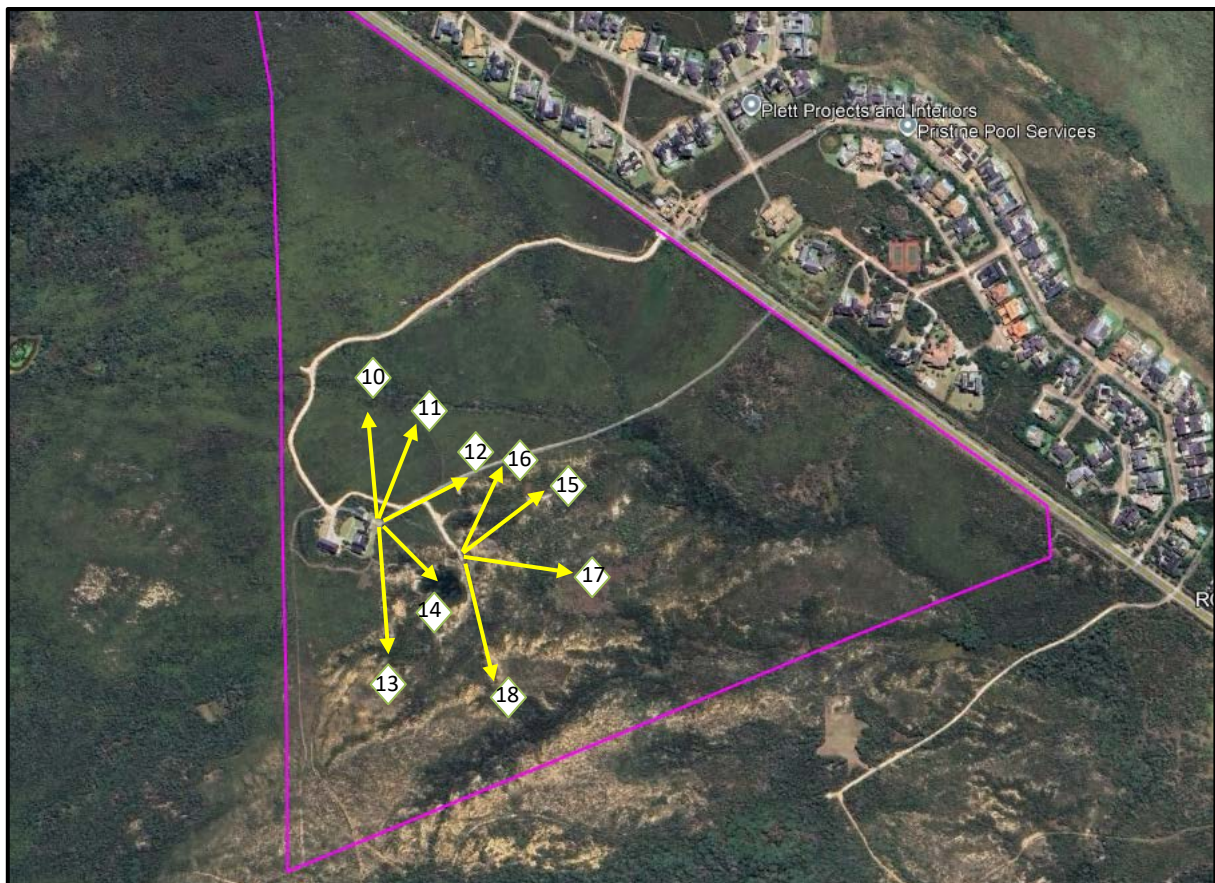
**Photo 7: Taken from the entrance road running through Portion 63, showing the old quarry and archeological site in the background**



**Photo 8: Taken from the entrance to Portion 63 parallel to Whale Rock Drive over Portion 62, showing the proposed area for the Museum of mankind in the foreground.**



**Photo 9: Taken from inside the site towards the boundary, showing Whale Rock Estate in the background**



**Figure 2: Aerial showing the position and direction of the following photos taken on 16 February 2026**



**Photo 10: Taken from the house on Portion 63, showing Portion 59 in the middle**



**Photo 11: Taken from the house on Portion 63, showing all three portions**



**Photo 12: Taken from the house on Portion 63, showing all three portions**



**Photo 13: Taken from the house on Portion 63 south-eastwards, showing the old quarry rim**



**Photo 14: Taken from the house on Portion 63 towards Robberg Nature reserve, showing the old quarry**



**Photo 15: Taken from the quarry on Portion 63 towards Whale Rock Drive, showing the old quarry in the foreground, Portion 62 in the middle and Whale Rock Estate in the background**



**Photo 16: Taken from the quarry on Portion 63 towards Whale Rock Drive, showing the Portion 59 in the middle and Whale Rock Estate in the background**



**Photo 17: Taken from the quarry on Portion 63 towards Whale Rock Drive, showing the old quarry in the foreground, Portion 62 in the middle and Whale Rock Estate in the background**



**Photo 18: Taken from the edge of the old quarry on Portion 63 towards the rim of the quarry**