

**CONSTRUCTION NOTES**

- G1: FIGURED DIMENSIONS TO TAKE PREFERENCE OVER SCALED DIMENSIONS. ANY ERRORS, OMISSIONS OR DISCREPANCIES AS SHOWN ON THE DRAWINGS SHALL BE REPORTED TO THE ARCHITECT IMMEDIATELY.
- G2: THESE ARCHITECTURAL DRAWINGS ARE TO BE READ IN CONJUNCTION WITH ENGINEERS' AND OTHER CONSULTANTS' DRAWINGS. ANY DISCREPANCIES IDENTIFIED BETWEEN THE ARCHITECTS DRAWINGS OR DOCUMENTATION FROM ANY OTHER SHOP DRAWINGS MUST BE REPORTED TO THE ARCHITECT IMMEDIATELY.
- G3: ALL WORK TO COMPLY WITH THE SANS 10400 AND ALL OTHER RELEVANT SANS STANDARDS.
- G4: ALL MATERIALS USED IN THE CONSTRUCTION TO BE SPECIFIED BY THE ARCHITECT AND NOT TO BE CHANGED WITHOUT THE PRIOR APPROVAL OF THE ARCHITECT. CHANGES TO DRAWINGS OR SPECIFICATIONS, DESIGN ASSOCIATED WITH THE DRAWINGS, THESE DRAWINGS REMAIN THE COPYRIGHT OF THE ARCHITECT AND MAY NOT BE USED OR COPIED WITHOUT THE ARCHITECT'S WRITTEN APPROVAL.
- G5: THESE DRAWINGS REMAIN THE COPYRIGHT OF THE ARCHITECT AND MAY NOT BE USED OR COPIED WITHOUT THE ARCHITECT'S WRITTEN APPROVAL.

- G6: THESE DRAWINGS REMAIN THE COPYRIGHT OF THE ARCHITECT AND MAY NOT BE USED OR COPIED WITHOUT THE ARCHITECT'S WRITTEN APPROVAL.
- G7: THESE DRAWINGS REMAIN THE COPYRIGHT OF THE ARCHITECT AND MAY NOT BE USED OR COPIED WITHOUT THE ARCHITECT'S WRITTEN APPROVAL.
- G8: THESE DRAWINGS REMAIN THE COPYRIGHT OF THE ARCHITECT AND MAY NOT BE USED OR COPIED WITHOUT THE ARCHITECT'S WRITTEN APPROVAL.
- G9: THESE DRAWINGS REMAIN THE COPYRIGHT OF THE ARCHITECT AND MAY NOT BE USED OR COPIED WITHOUT THE ARCHITECT'S WRITTEN APPROVAL.

- G10: THESE DRAWINGS REMAIN THE COPYRIGHT OF THE ARCHITECT AND MAY NOT BE USED OR COPIED WITHOUT THE ARCHITECT'S WRITTEN APPROVAL.
- G11: THESE DRAWINGS REMAIN THE COPYRIGHT OF THE ARCHITECT AND MAY NOT BE USED OR COPIED WITHOUT THE ARCHITECT'S WRITTEN APPROVAL.
- G12: THESE DRAWINGS REMAIN THE COPYRIGHT OF THE ARCHITECT AND MAY NOT BE USED OR COPIED WITHOUT THE ARCHITECT'S WRITTEN APPROVAL.
- G13: THESE DRAWINGS REMAIN THE COPYRIGHT OF THE ARCHITECT AND MAY NOT BE USED OR COPIED WITHOUT THE ARCHITECT'S WRITTEN APPROVAL.

- G14: THESE DRAWINGS REMAIN THE COPYRIGHT OF THE ARCHITECT AND MAY NOT BE USED OR COPIED WITHOUT THE ARCHITECT'S WRITTEN APPROVAL.
- G15: THESE DRAWINGS REMAIN THE COPYRIGHT OF THE ARCHITECT AND MAY NOT BE USED OR COPIED WITHOUT THE ARCHITECT'S WRITTEN APPROVAL.
- G16: THESE DRAWINGS REMAIN THE COPYRIGHT OF THE ARCHITECT AND MAY NOT BE USED OR COPIED WITHOUT THE ARCHITECT'S WRITTEN APPROVAL.
- G17: THESE DRAWINGS REMAIN THE COPYRIGHT OF THE ARCHITECT AND MAY NOT BE USED OR COPIED WITHOUT THE ARCHITECT'S WRITTEN APPROVAL.

- G18: THESE DRAWINGS REMAIN THE COPYRIGHT OF THE ARCHITECT AND MAY NOT BE USED OR COPIED WITHOUT THE ARCHITECT'S WRITTEN APPROVAL.
- G19: THESE DRAWINGS REMAIN THE COPYRIGHT OF THE ARCHITECT AND MAY NOT BE USED OR COPIED WITHOUT THE ARCHITECT'S WRITTEN APPROVAL.
- G20: THESE DRAWINGS REMAIN THE COPYRIGHT OF THE ARCHITECT AND MAY NOT BE USED OR COPIED WITHOUT THE ARCHITECT'S WRITTEN APPROVAL.
- G21: THESE DRAWINGS REMAIN THE COPYRIGHT OF THE ARCHITECT AND MAY NOT BE USED OR COPIED WITHOUT THE ARCHITECT'S WRITTEN APPROVAL.

- G22: THESE DRAWINGS REMAIN THE COPYRIGHT OF THE ARCHITECT AND MAY NOT BE USED OR COPIED WITHOUT THE ARCHITECT'S WRITTEN APPROVAL.
- G23: THESE DRAWINGS REMAIN THE COPYRIGHT OF THE ARCHITECT AND MAY NOT BE USED OR COPIED WITHOUT THE ARCHITECT'S WRITTEN APPROVAL.
- G24: THESE DRAWINGS REMAIN THE COPYRIGHT OF THE ARCHITECT AND MAY NOT BE USED OR COPIED WITHOUT THE ARCHITECT'S WRITTEN APPROVAL.
- G25: THESE DRAWINGS REMAIN THE COPYRIGHT OF THE ARCHITECT AND MAY NOT BE USED OR COPIED WITHOUT THE ARCHITECT'S WRITTEN APPROVAL.

- G26: THESE DRAWINGS REMAIN THE COPYRIGHT OF THE ARCHITECT AND MAY NOT BE USED OR COPIED WITHOUT THE ARCHITECT'S WRITTEN APPROVAL.
- G27: THESE DRAWINGS REMAIN THE COPYRIGHT OF THE ARCHITECT AND MAY NOT BE USED OR COPIED WITHOUT THE ARCHITECT'S WRITTEN APPROVAL.
- G28: THESE DRAWINGS REMAIN THE COPYRIGHT OF THE ARCHITECT AND MAY NOT BE USED OR COPIED WITHOUT THE ARCHITECT'S WRITTEN APPROVAL.
- G29: THESE DRAWINGS REMAIN THE COPYRIGHT OF THE ARCHITECT AND MAY NOT BE USED OR COPIED WITHOUT THE ARCHITECT'S WRITTEN APPROVAL.

**GENERAL NOTES:**

1. ALL DIMENSIONS TO COMPLY WITH SANS 10400 PART 1 - DIMENSIONS.

2. ALL DIMENSIONS TO COMPLY WITH SANS 10400 PART 2 - DRAINAGE.

3. ALL DIMENSIONS TO COMPLY WITH SANS 10400 PART 3 - WINDS.

4. ALL DIMENSIONS TO COMPLY WITH SANS 10400 PART 4 - SOUND.

5. ALL DIMENSIONS TO COMPLY WITH SANS 10400 PART 5 - THERMAL INSULATION.

6. ALL DIMENSIONS TO COMPLY WITH SANS 10400 PART 6 - SOLAR PROTECTION.

7. ALL DIMENSIONS TO COMPLY WITH SANS 10400 PART 7 - LIGHTING.

8. ALL DIMENSIONS TO COMPLY WITH SANS 10400 PART 8 - PLUMBING.

9. ALL DIMENSIONS TO COMPLY WITH SANS 10400 PART 9 - ELECTRICAL.

10. ALL DIMENSIONS TO COMPLY WITH SANS 10400 PART 10 - SECURITY.

11. ALL DIMENSIONS TO COMPLY WITH SANS 10400 PART 11 - ACCESSIBILITY.

12. ALL DIMENSIONS TO COMPLY WITH SANS 10400 PART 12 - SUSTAINABILITY.

13. ALL DIMENSIONS TO COMPLY WITH SANS 10400 PART 13 - HEALTH AND SAFETY.

14. ALL DIMENSIONS TO COMPLY WITH SANS 10400 PART 14 - ENVIRONMENTAL.

15. ALL DIMENSIONS TO COMPLY WITH SANS 10400 PART 15 - ENERGY EFFICIENCY.

**SECTION A-A**  
SCALE 1:100 / 1cm = 1m

CONCRETE FLAT ROOF, 50MM STONE FIBRES ON 20mm POLYSTYRENE ON 5mm DEBRUM WATERPROOFING (FITTED TO MANUFACTURERS SPECIFICATIONS) OVER 100mm CONCRETE SLAB TO RULERS OUTLETS ON CONCRETE SLAB TO ENGINEERS SPEC. & DETAIL.

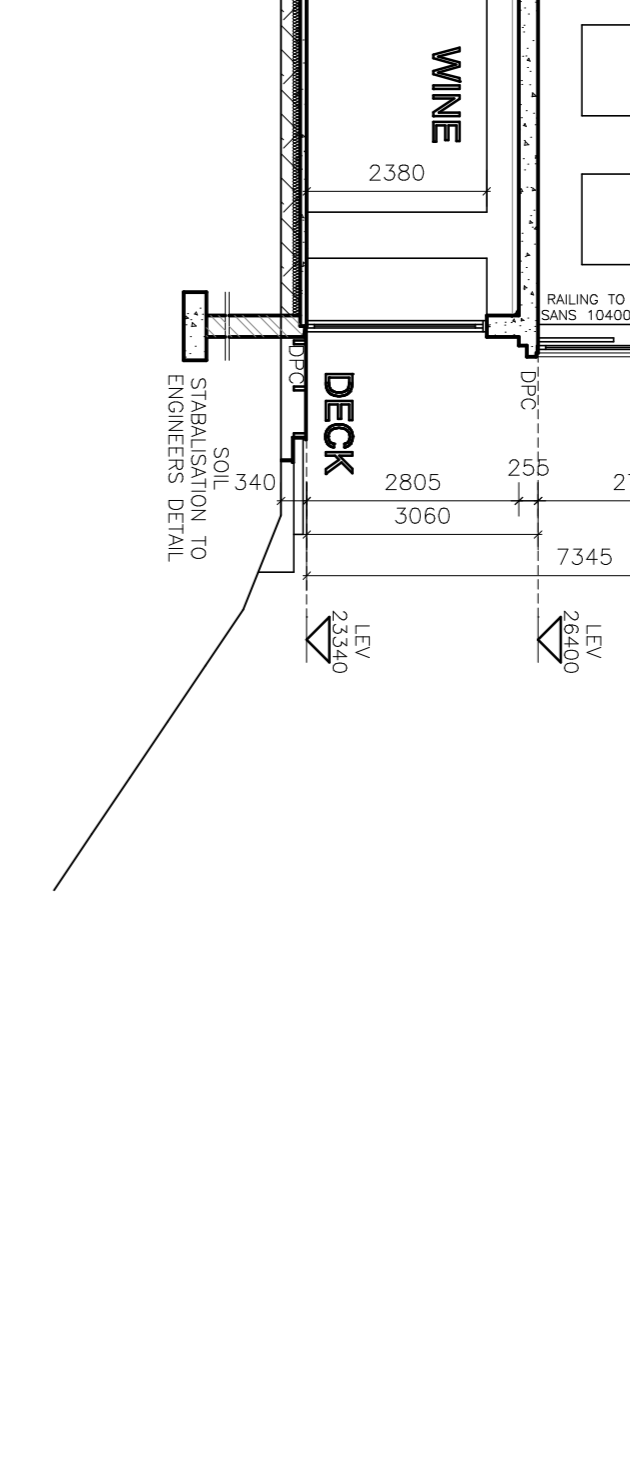
ROOF NOTE: WARELE DOUBLE ROOMY CONCRETE ROOF TILES TO 20mm POLYSTYRENE ON 5mm DEBRUM WATERPROOFING (FITTED TO MANUFACTURERS SPECIFICATIONS) OVER 100mm CONCRETE SLAB TO RULERS OUTLETS ON CONCRETE SLAB TO ENGINEERS SPEC. & DETAIL.

FIRST FLOOR ROOF TO HAVE MOUND PLYSTER DETAIL TO EGRESS TO BRUSH.

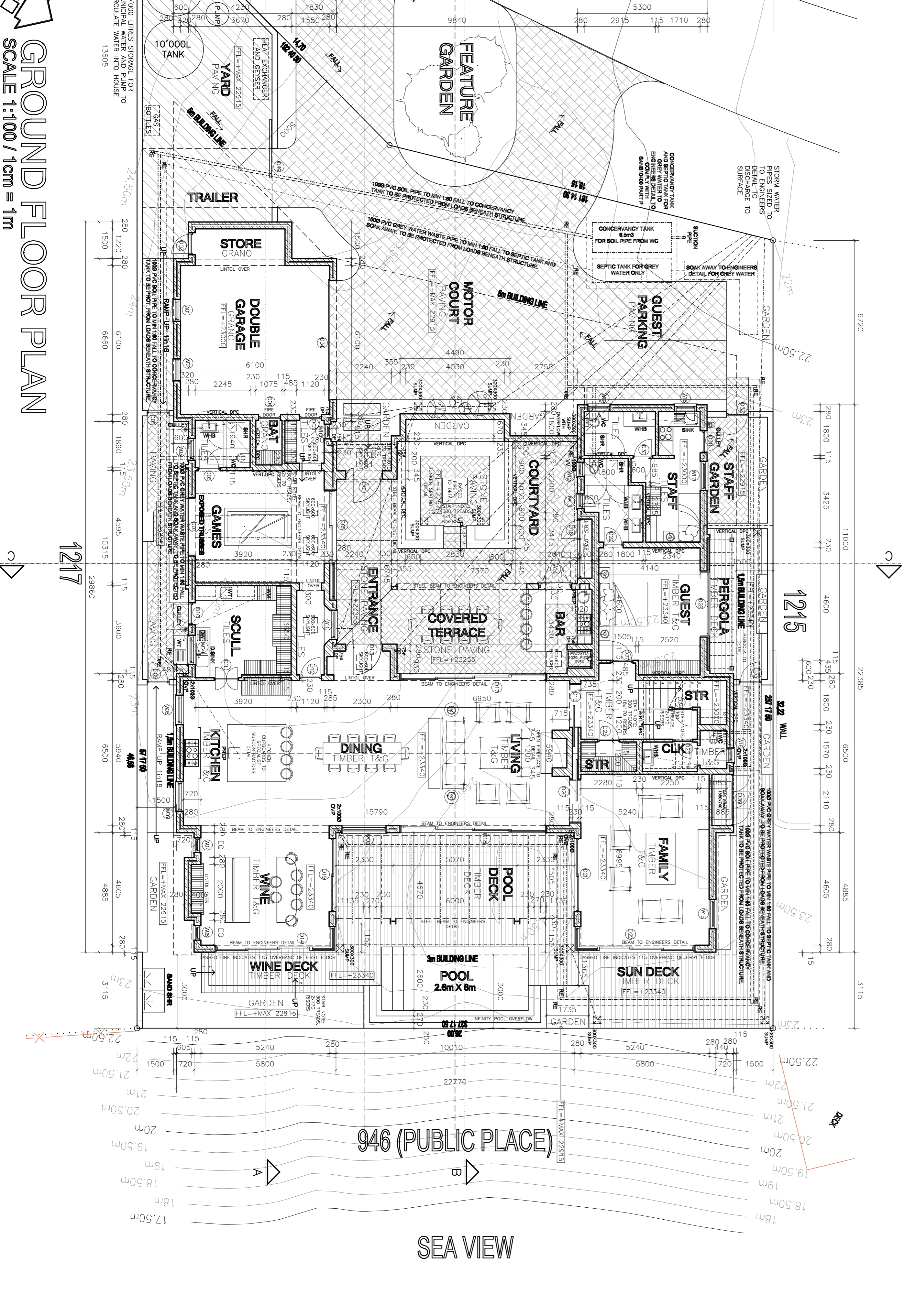
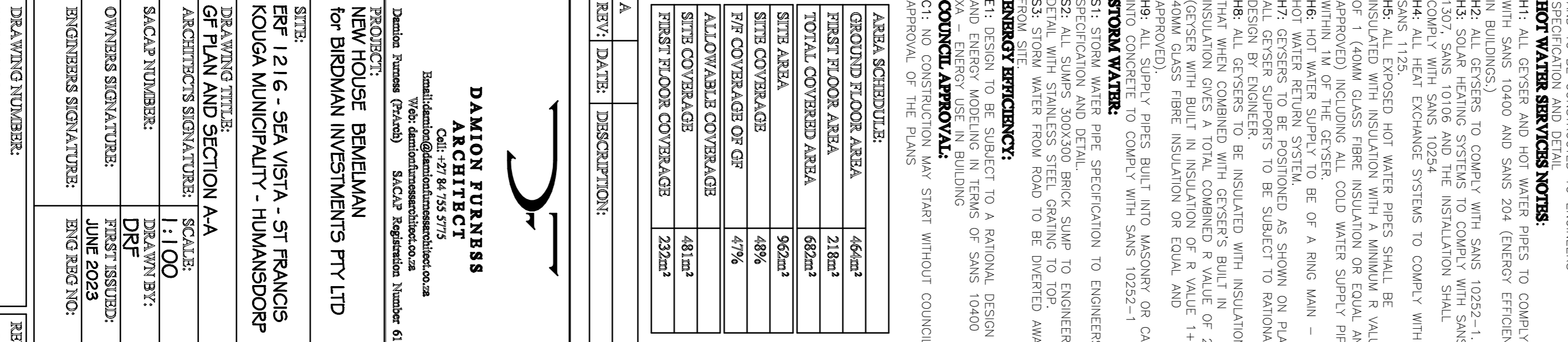
NOTE: ALL STEEL AND CONCRETE STRUCTURE TO ROBENERS SPECIFICATION AND DETAIL.

UNDERSLAB WITH A MIN. R VALUE OF 1 (MIN 35mm HIGH DENSITY RIGID EXPANDED POLYSTYRENE (EPS) ZONGMS) ON DPM.

EXPRESSED 150x75 SPROCKETS TO BE EQUALLY SPACED AROUND BUILDING EX 150x20 TIMBER FACIA BOARD WITH ROUNDED BASE.



**SECTION A-A**  
SCALE 1:100 / 1cm = 1m



**GROUND FLOOR PLAN**  
SCALE 1:100 / 1cm = 1m

**CONSTRUCTION NOTES**

1. ALL DIMENSIONS TO COMPLY WITH SANS 10400 PART 1 - DIMENSIONS.

2. ALL DIMENSIONS TO COMPLY WITH SANS 10400 PART 2 - DRAINAGE.

3. ALL DIMENSIONS TO COMPLY WITH SANS 10400 PART 3 - WINDS.

4. ALL DIMENSIONS TO COMPLY WITH SANS 10400 PART 4 - SOUND.

5. ALL DIMENSIONS TO COMPLY WITH SANS 10400 PART 5 - THERMAL INSULATION.

6. ALL DIMENSIONS TO COMPLY WITH SANS 10400 PART 6 - SOLAR PROTECTION.

7. ALL DIMENSIONS TO COMPLY WITH SANS 10400 PART 7 - LIGHTING.

8. ALL DIMENSIONS TO COMPLY WITH SANS 10400 PART 8 - PLUMBING.

9. ALL DIMENSIONS TO COMPLY WITH SANS 10400 PART 9 - ELECTRICAL.

10. ALL DIMENSIONS TO COMPLY WITH SANS 10400 PART 10 - SECURITY.

11. ALL DIMENSIONS TO COMPLY WITH SANS 10400 PART 11 - ACCESSIBILITY.

12. ALL DIMENSIONS TO COMPLY WITH SANS 10400 PART 12 - SUSTAINABILITY.

13. ALL DIMENSIONS TO COMPLY WITH SANS 10400 PART 13 - HEALTH AND SAFETY.

14. ALL DIMENSIONS TO COMPLY WITH SANS 10400 PART 14 - ENVIRONMENTAL.

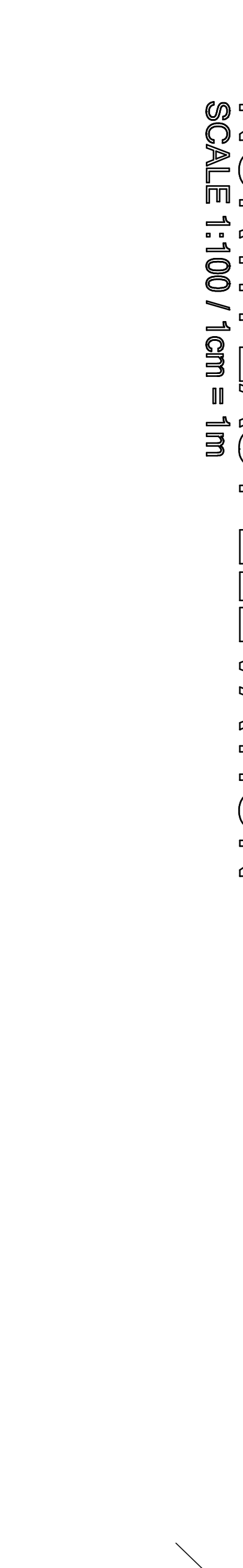
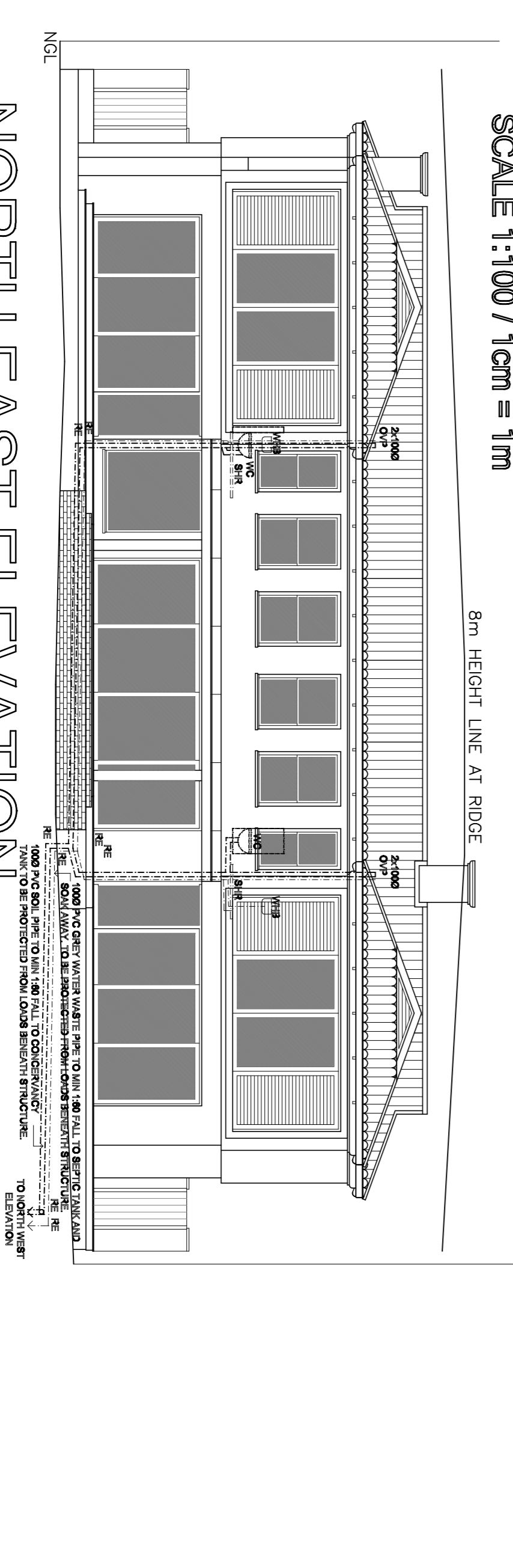
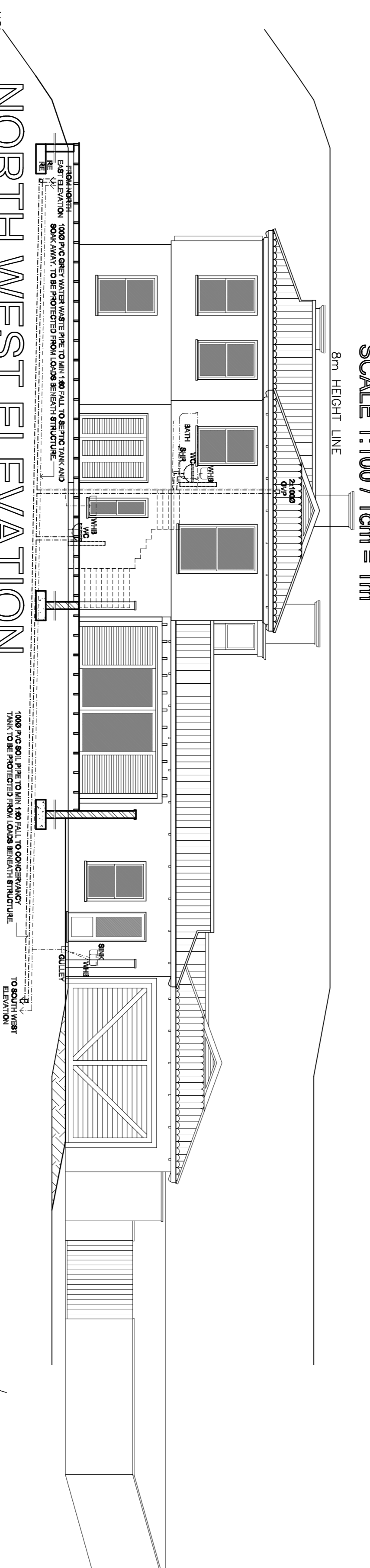
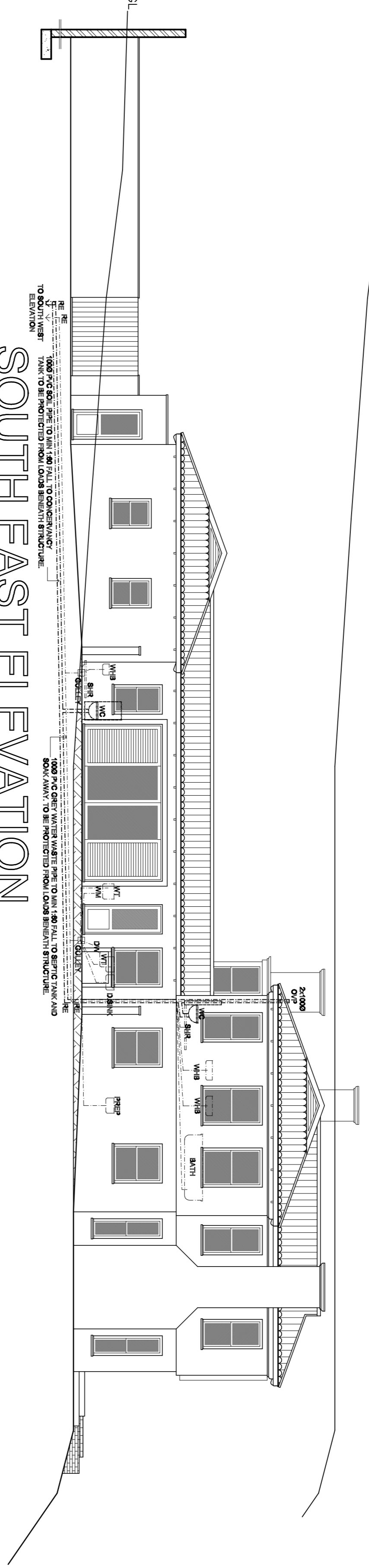
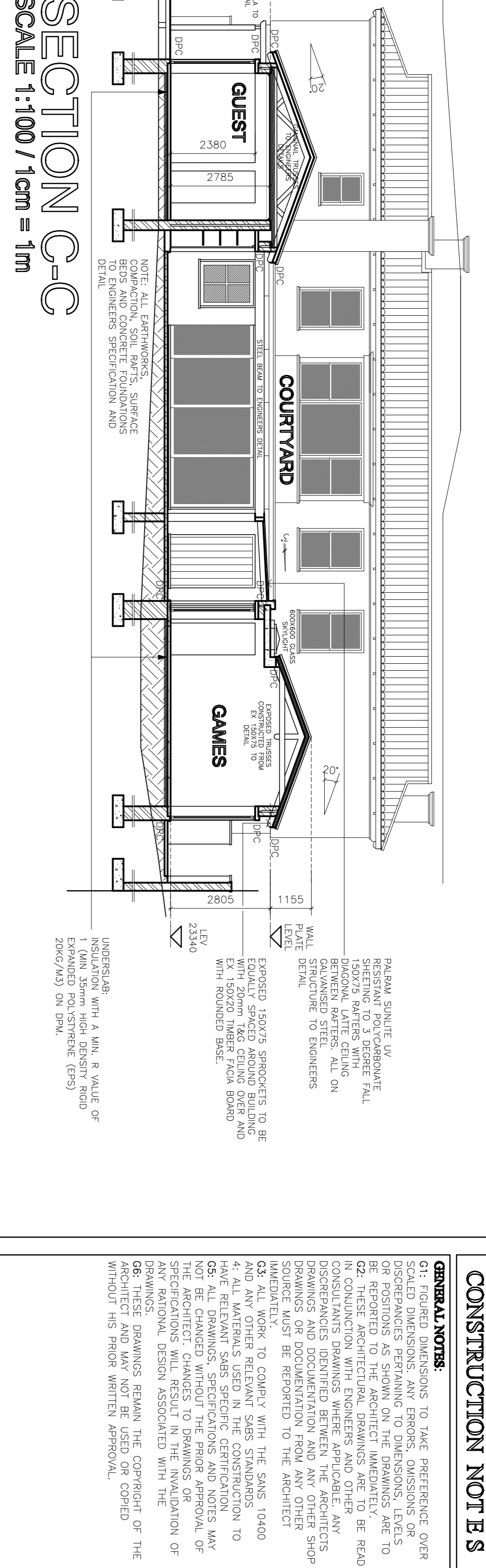
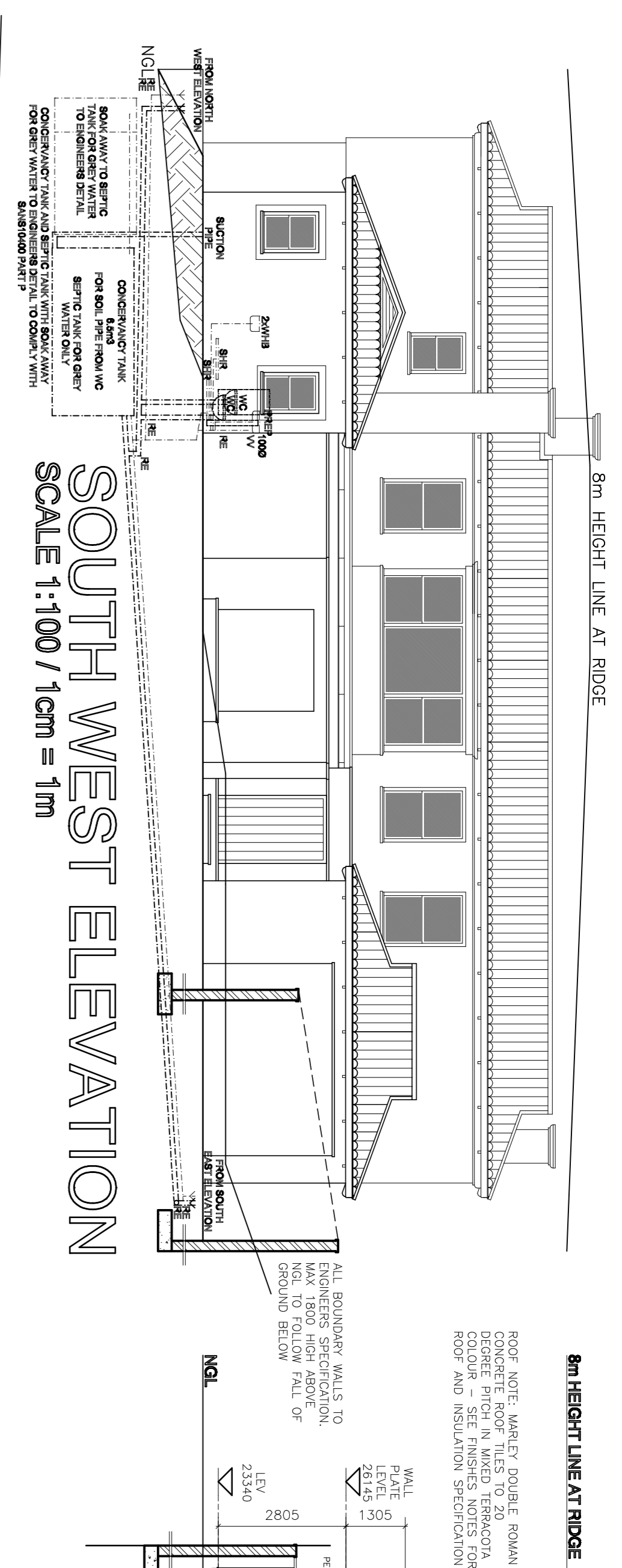
15. ALL DIMENSIONS TO COMPLY WITH SANS 10400 PART 15 - ENERGY EFFICIENCY.

**DAVION FURNES ARCHITECT**  
PROJECT: NEW HOUSE DEMILAN for BRIDMAN INVESTMENTS PTY LTD  
DATE: 2023

REVISIONS:

REV: 1	DATE: 2023-06-01	DESCRIPTION: INITIAL DESIGN
REV: 2	DATE: 2023-06-15	DESCRIPTION: REVISED FOUNDATIONS





**CONSTRUCTION NOTES**

- G1. FIGURED DIMENSIONS TO TAKE PREFERENCE OVER UNFIGURED DIMENSIONS.
- G2. DISCREPANCIES PERTAINING TO DIMENSIONS, LEVELS OR POSITIONS AS SHOWN ON THE DRAWINGS ARE TO BE REPORTED TO THE ARCHITECT IMMEDIATELY.
- G3. ALL WORK TO COMPLY WITH THE SANS 10400 AND ANY OTHER RELEVANT SABS STANDARDS.
- G4. ALL DIMENSIONS TO FACE UNLESS SPECIFICALLY NOTED OTHERWISE.
- G5. ALL DRAWINGS, SPECIFICATIONS AND NOTES MAY NOT BE CHANGED WITHOUT THE PRIOR APPROVAL OF THE ARCHITECT.
- G6. THESE DRAWINGS REMAIN THE COPYRIGHT OF THE ARCHITECT AND ARE NOT TO BE USED OR COPIED WITHOUT HIS PRIOR WRITTEN APPROVAL.

REV	DATE	DESCRIPTION
A		

**DAMION FURRERS ARCHITECT**

1216 - SEA VISTA - ST FRANCIS KOUGA MUNICIPALITY - HUMANSDORP

PROJECT: NEW HOUSE BENEWMAN for BIKOMAN INVESTMENTS PTY LTD

DATE: 2023

SCALE: 1:100

DRAWN BY: DRF

FIRST ISSUED: JUNE 2023

ENGINEER'S SIGNATURE: ENG REG NO:

DRAWING NUMBER: BRD/23/003

REV: 2