



Appendix C: Draft BAR – Photographs

**PROPOSED MEDIUM TO HIGH DENSITY RESIDENTIAL DEVELOPMENT ON RE / ERF 2074, MARINE WAY,
BITOU LOCAL MUNICIPALITY, WESTERN CAPE**



Figure 1: Marine Drive and traffic circle



Figure 2: Dumping of waste noted on site



Eco Route

ENVIRONMENTAL CONSULTANCY

REGISTRATION NO. 1998/031976/23

DR. COLLEEN EBERSOHN

PhD Univ. Pretoria

Cell: 072 222 6013

email: ebersohn@cyberperk.co.za

MS. JANET EBERSOHN

BSc. Hons. Environmental Management

Cell: 082 557 7122

e-mail: janet@ecoroute.co.za



Figure 3: Adjacent cutty Sark residential area (east)



Figure 4: Carpobrotus vegetation on site; excellent for rehabilitation and landscaping requirements



Eco Route

ENVIRONMENTAL CONSULTANCY

REGISTRATION NO. 1998/031976/23

DR. COLLEEN EBERSOHN

PhD Univ. Pretoria

Cell: 072 222 6013

email: ebersohn@cyberperk.co.za

MS. JANET EBERSOHN

BSc. Hons. Environmental Management

Cell: 082 557 7122

e-mail: janet@ecoroute.co.za



Figure 5: Transformed vegetation on northern section of site



Figure 6: Alien vegetation on site presenting increased fire risk to the site



Figure 7: Existing road on site





Eco Route

ENVIRONMENTAL CONSULTANCY

REGISTRATION NO. 1998/031976/23

DR. COLLEEN EBERSOHN

PhD Univ. Pretoria

Cell: 072 222 6013

email: ebersohn@cyberperk.co.za

MS. JANET EBERSOHN

BSc. Hons. Environmental Management

Cell: 082 557 7122

e-mail: janet@ecoroute.co.za



Figure 8: South east from central / south section of site



Figure 9: South west from central / south section of site (showing intact fynbos)

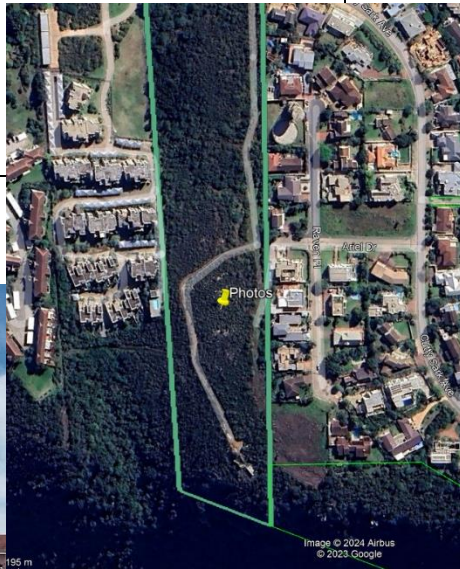


Figure 10: West from central / south section of site

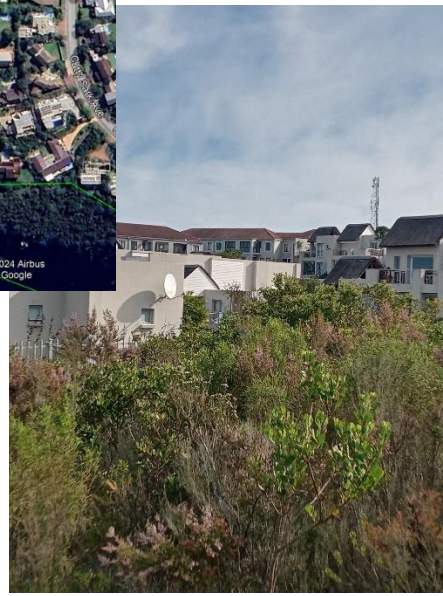


Figure 11: North west from central / south section of site



Eco Route

ENVIRONMENTAL CONSULTANCY

REGISTRATION NO. 1998/031976/23

DR. COLLEEN EBERSOHN

PhD Univ. Pretoria

Cell: 072 222 6013

email: ebersohn@cyberperk.co.za

MS. JANET EBERSOHN

BSc. Hons. Environmental Management

Cell: 082 557 7122

e-mail: janet@ecoroute.co.za



Figure 12: South from southernmost section of site section of site (showing intact fynbos)

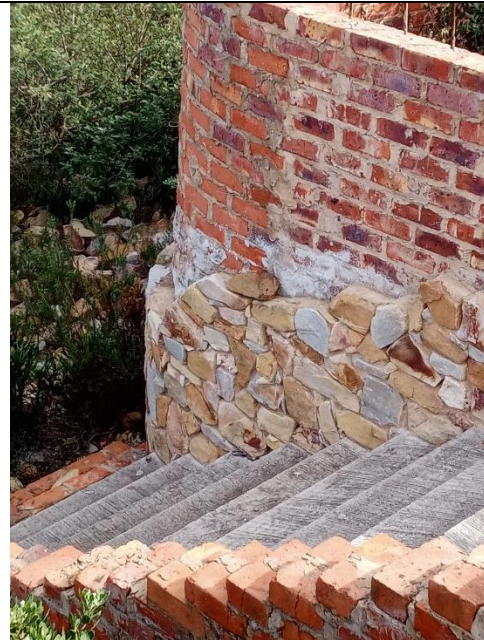


Figure 13: existing development footprint in south

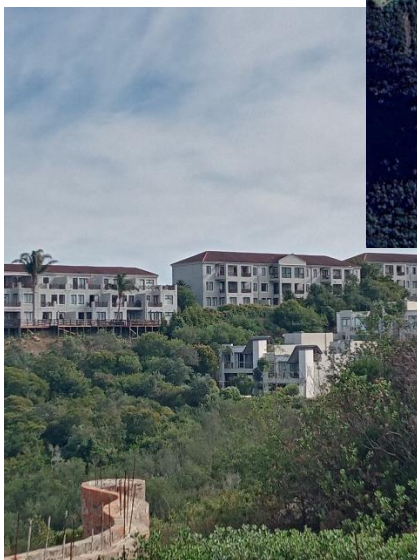


Figure 14: NWW from southernmost section of site section of site

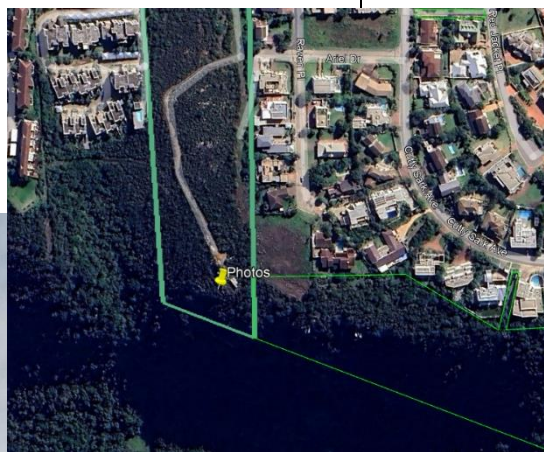


Figure 15: NNW from southernmost section of site section of site