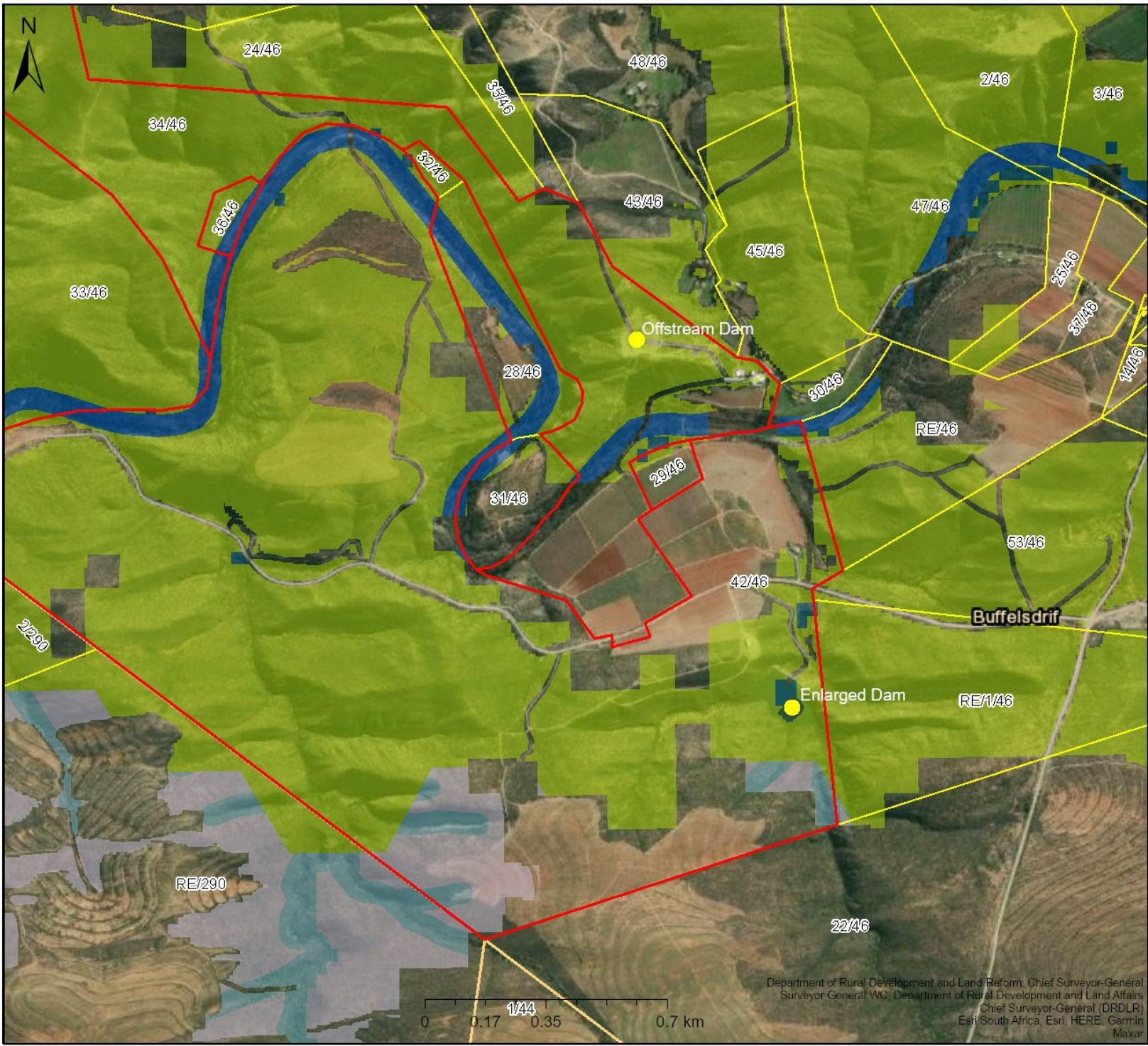


Farm Buffelsrivier 42/46 and 34/46,



Legend

- Parent Farms
- Farm Portions
- BSP ESA**
- ESA: Aquatic
- ESA: Terrestrial
- BSP CBA**
- CBA: Terrestrial
- CBA: River
- CBA: Wetland

Map Center: Lon: 22°46'18.8"E
Lat: 33°43'16.2"S

Scale: 1:18 056

Date created: October 20, 2022



Farm Buffelsrivier 42/46 and 34/46,

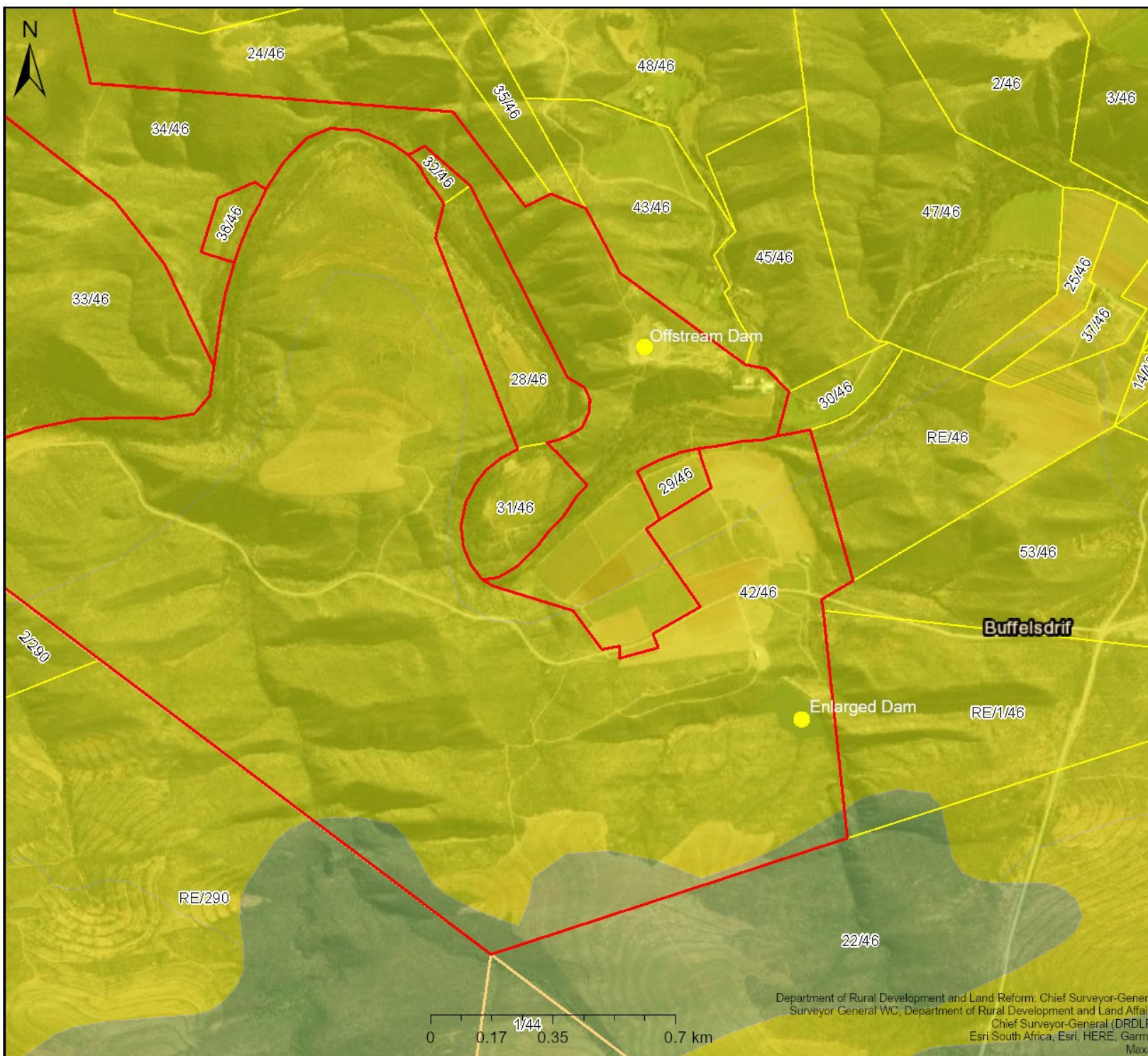
Legend

- Parent Farms
- Farm Portions

Ecosystem Threat Status 2016

Status

- LT
- VU



Map Center: Lon: 22°46'18.8"E
Lat: 33°43'16.2"S

Scale: 1:18 056

Date created: October 20, 2022



Western Cape
Government

FOR YOU

Agriculture

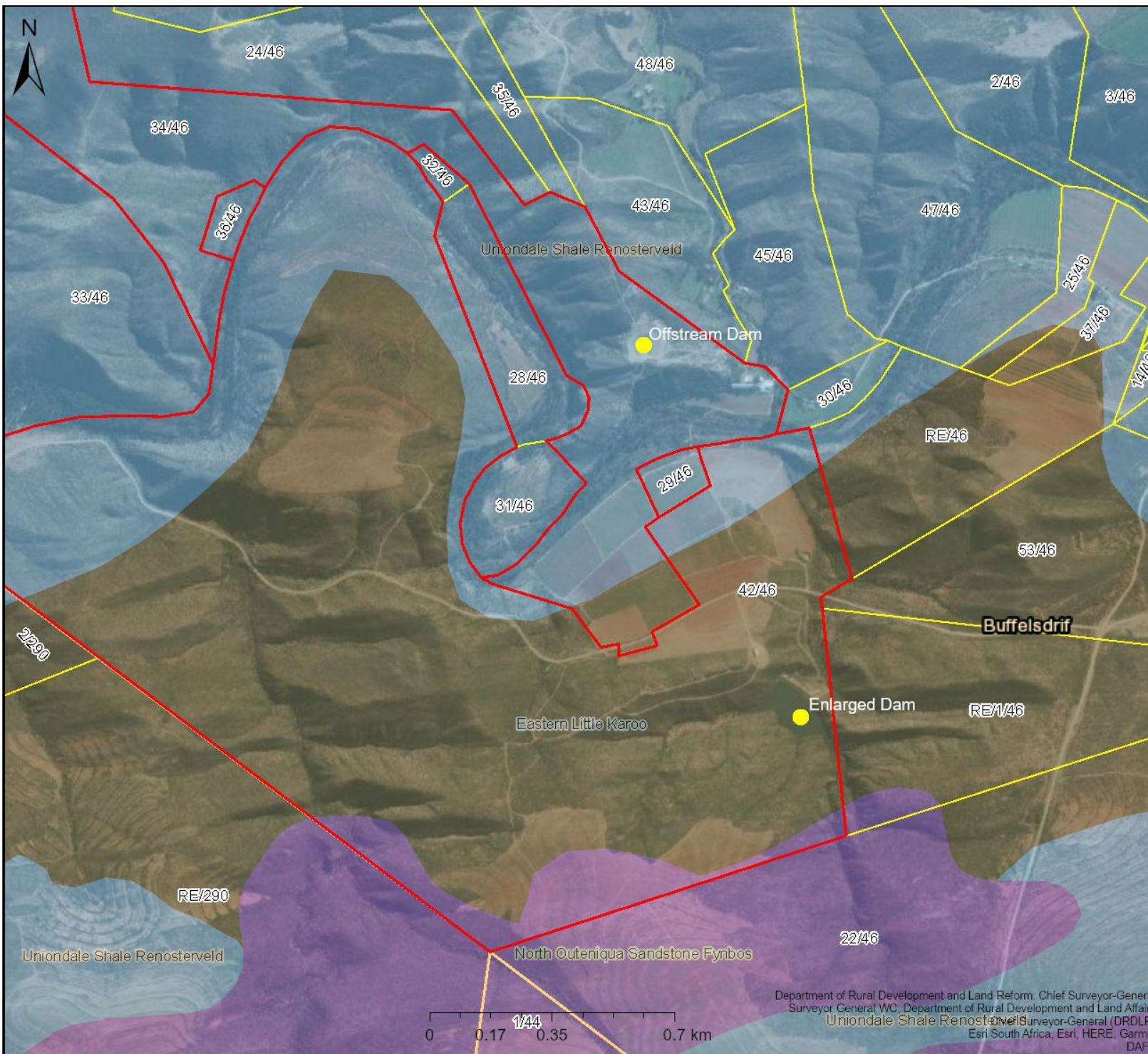
Farm Buffelsrivier 42/46 and 34/46,

Legend

-  Parent Farms
-  Farm Portions

VEGMAP 2012

-  FFs 18 North Outeniqua Sandstone Fynbos
-  FRs 16 Uniondale Shale Renosterveld
-  SKv 11 Eastern Little Karoo



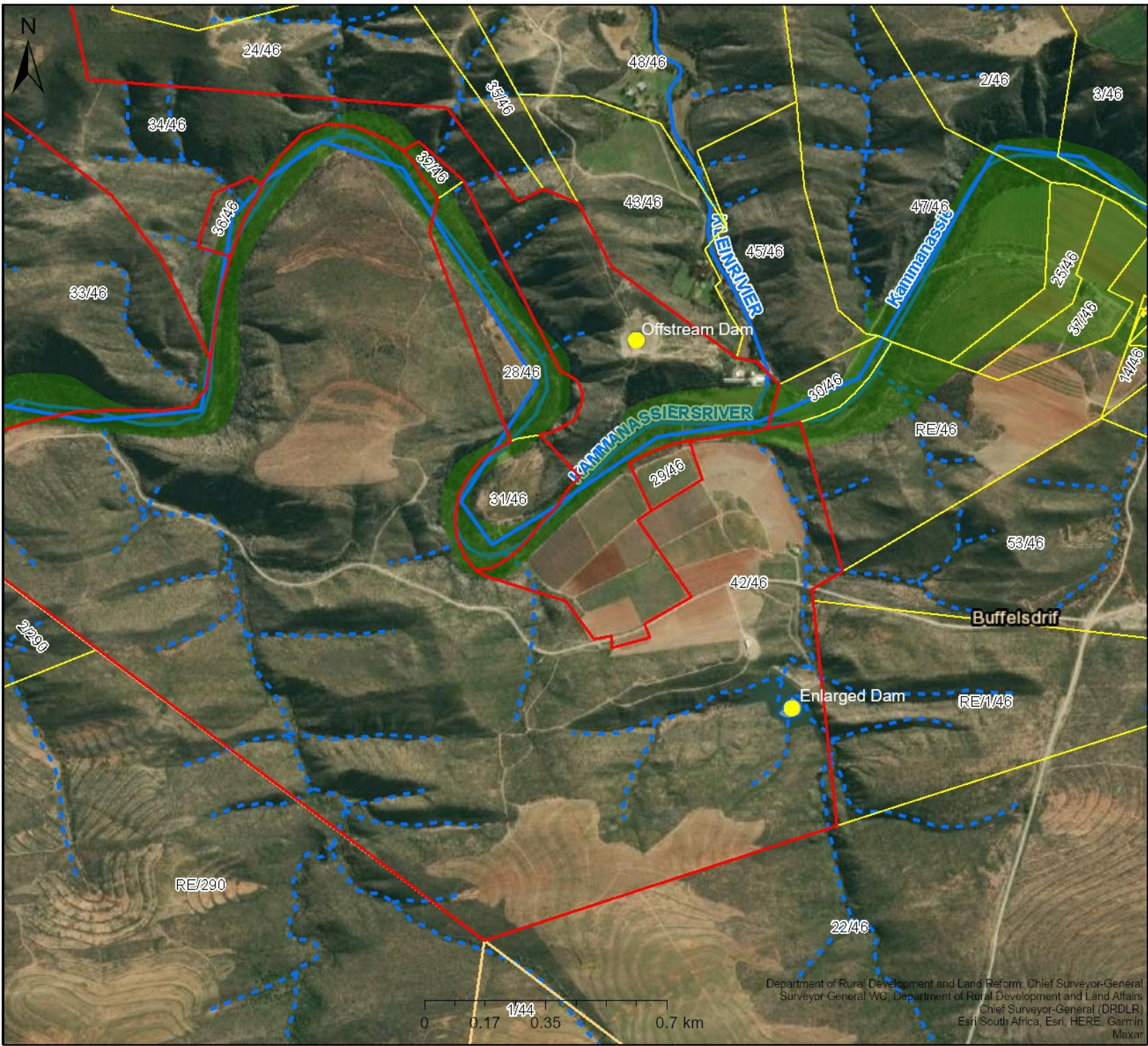
Map Center: Lon: 22°46'18.8"E
Lat: 33°43'16.2"S

Scale: 1:18 056

Date created: October 20, 2022



Department of Rural Development and Land Reform: Chief Surveyor-General
Surveyor-General WC, Department of Rural Development and Land Affairs
Uniondale Shale Renosterveld Surveyor-General (DRDLR)
Esri South Africa, Esri, HERE, Garmin
DAFF



Farm Buffelsrivier 42/46 and 34/46,

Legend

- Parent Farms
- Farm Portions
- Rivers (DWS)**
- CLASS
- Perennial
- Wetlands (NWM5)**
- Classification
- Floodplain wetland
- Rivers**
- Perennial
- Non-Perennial
- Dams

Map Center: Lon: 22°46'18.8"E
Lat: 33°43'16.2"S

Scale: 1:18 056

Date created: October 20, 2022



Department of Rural Development and Land Reform: Chief Surveyor-General
Surveyor General WC, Department of Rural Development and Land Affairs
Chief Surveyor-General (DRDLR)
Esri South Africa, Esri, HERE, Garmin
Maxar