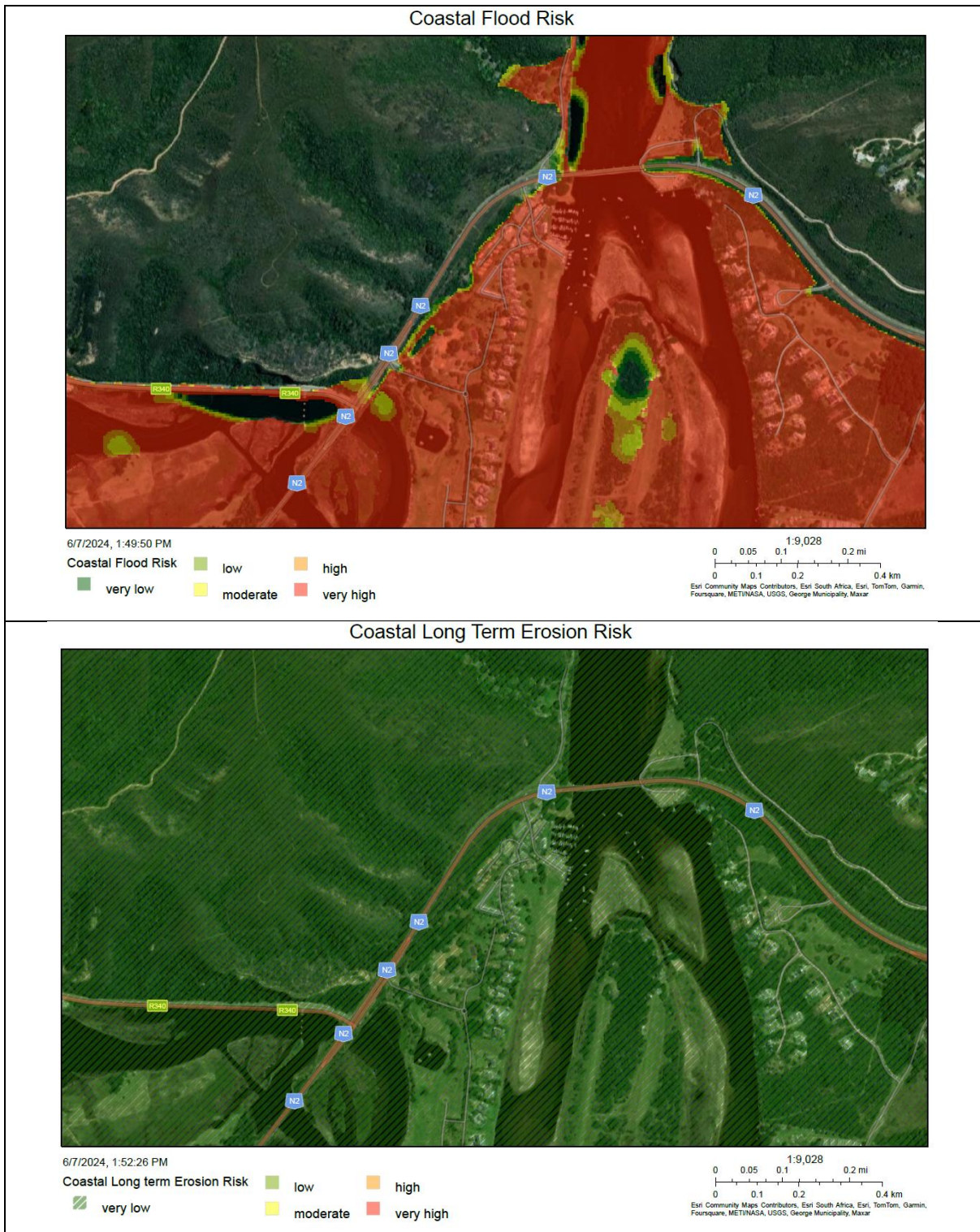
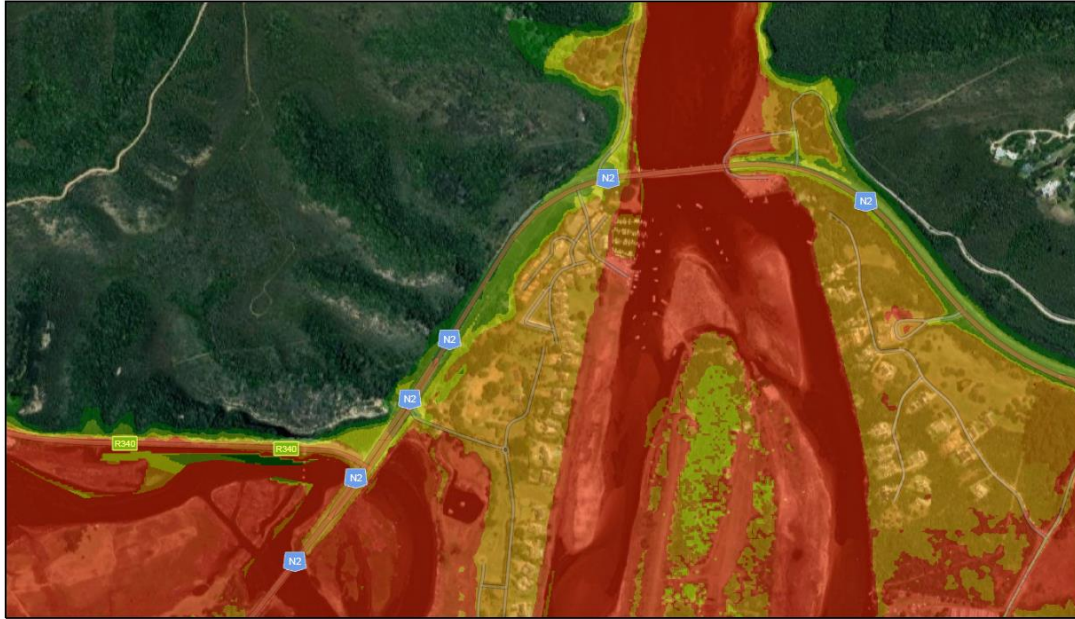


Appendix A2 - Coastal Risk Zones as delineated in terms of ICMA for the Western Cape by the Department of Environmental Affairs and Development Planning



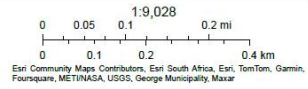
Estuary Flood Risk



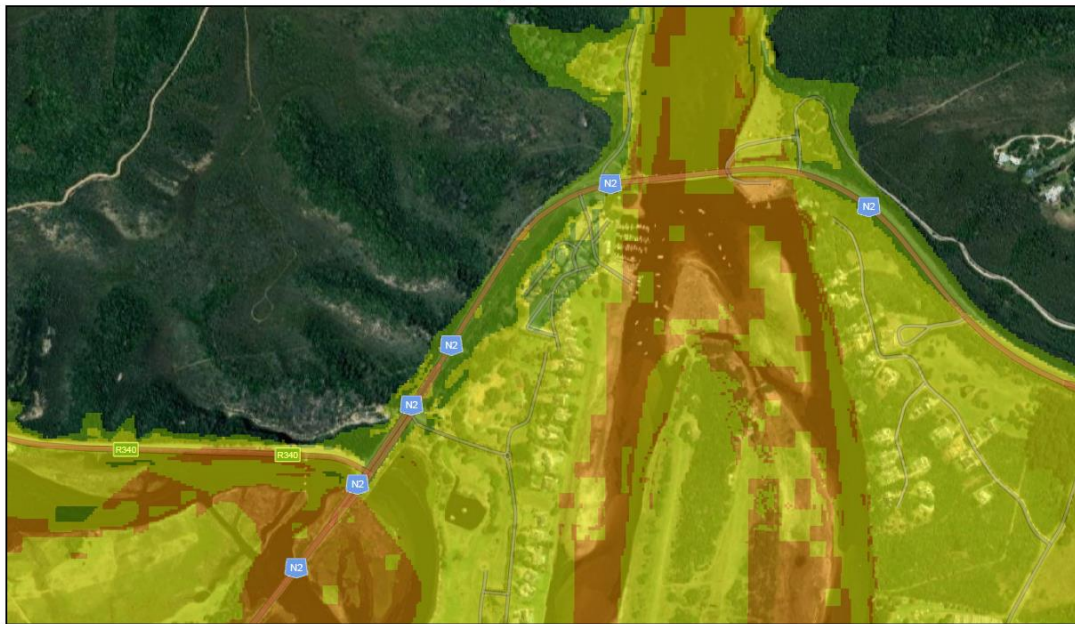
6/7/2024, 1:54:32 PM

Estuary Flood Risk

- very low
- low
- moderate
- high
- very high



Estuary Erosion Risk



6/7/2024, 1:56:14 PM

Estuary Erosion Risk

- very low
- low
- moderate
- high
- very high

