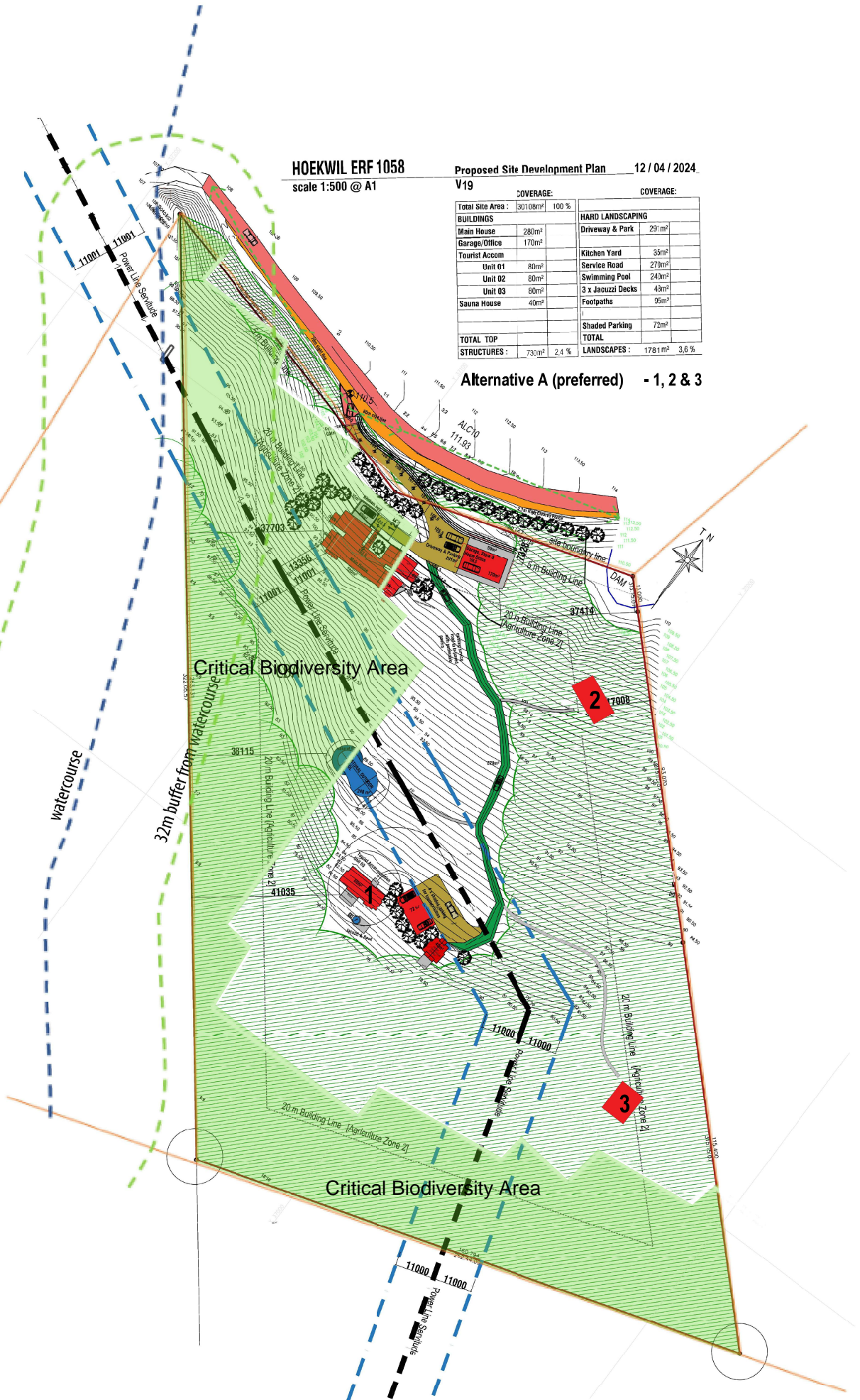


**HOEKWIL ERF 1058**  
scale 1:500 @ A1

**Proposed Site Development Plan** 12 / 04 / 2024  
V19

COVERAGE:		COVERAGE:	
Total Site Area :	30108m <sup>2</sup>	100 %	
<b>BUILDINGS</b>			
Main House	280m <sup>2</sup>		
Garage/Office	170m <sup>2</sup>		
Tourist Accom			
Unit 01	80m <sup>2</sup>		
Unit 02	80m <sup>2</sup>		
Unit 03	80m <sup>2</sup>		
Sauna House	40m <sup>2</sup>		
<b>TOTAL TOP STRUCTURES :</b> 730m <sup>2</sup> 2.4 %			
<b>HARD LANDSCAPING</b>			
Driveway & Park	297m <sup>2</sup>		
Kitchen Yard	35m <sup>2</sup>		
Service Road	270m <sup>2</sup>		
Swimming Pool	240m <sup>2</sup>		
3 x Jacuzzi Decks	43m <sup>2</sup>		
Footpaths	95m <sup>2</sup>		
Shaded Parking	72m <sup>2</sup>		
<b>TOTAL LANDSCAPES :</b> 1781m <sup>2</sup> 3.6 %			

**Alternative A (preferred) - 1, 2 & 3**





# Critical Biodiversity Area

## Legend

Farm Portions

Erf

## BSP CBA

CBA: Terrestrial

CBA: Forest

CBA: River

CBA: Estuary

CBA: Wetland

**Map Center:** Lon: 22°35'53.5"E  
 Lat: 33°59'26.9"S

**Scale:** 1:9 028

**Date created:** September 19, 2022



**Western Cape  
 Government**  
**FOR YOU**

Agriculture

Surveyor General WC, Department of Rural Development and Land Affairs,  
 Chief Surveyor-General (DRDLR),  
 East-South Africa, East-HERO, Garmin  
 Department of Rural Development and Land Reform,  
 Mafkar



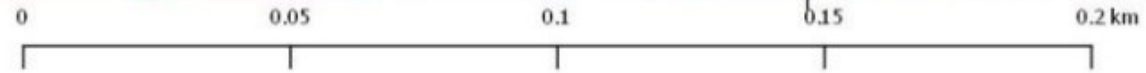
# Sensitivity (Aquatic Biodiversity)

22.598°E

22.600°E



33.990°S



## Legend

### Watercourses

--- Non-perennial

### Sensitivity (Aquatic Biodiversity)

Low

Very High

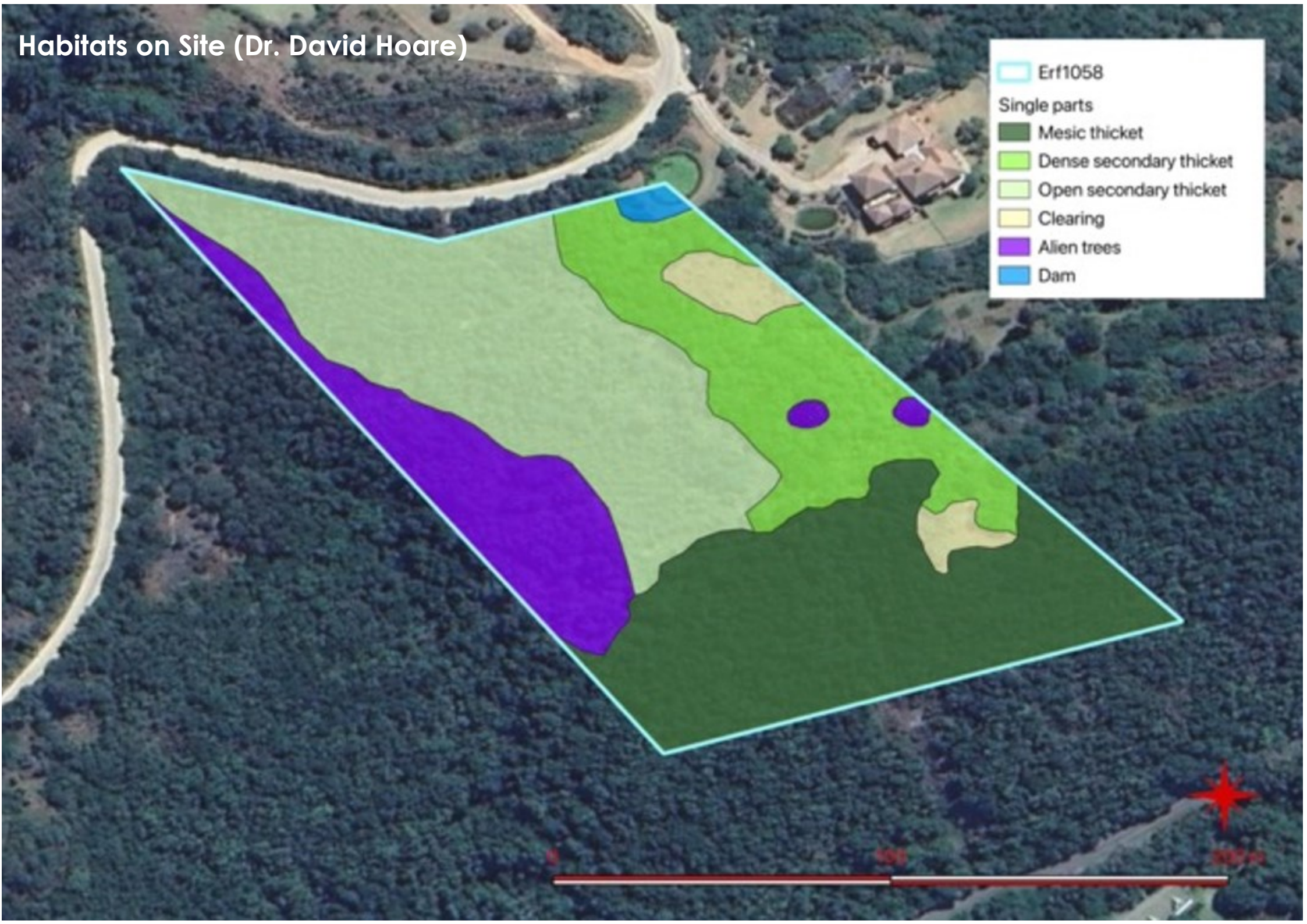


# Habitats on Site (Dr. David Hoare)

Erf1058

Single parts

- Mesic thicket
- Dense secondary thicket
- Open secondary thicket
- Clearing
- Alien trees
- Dam

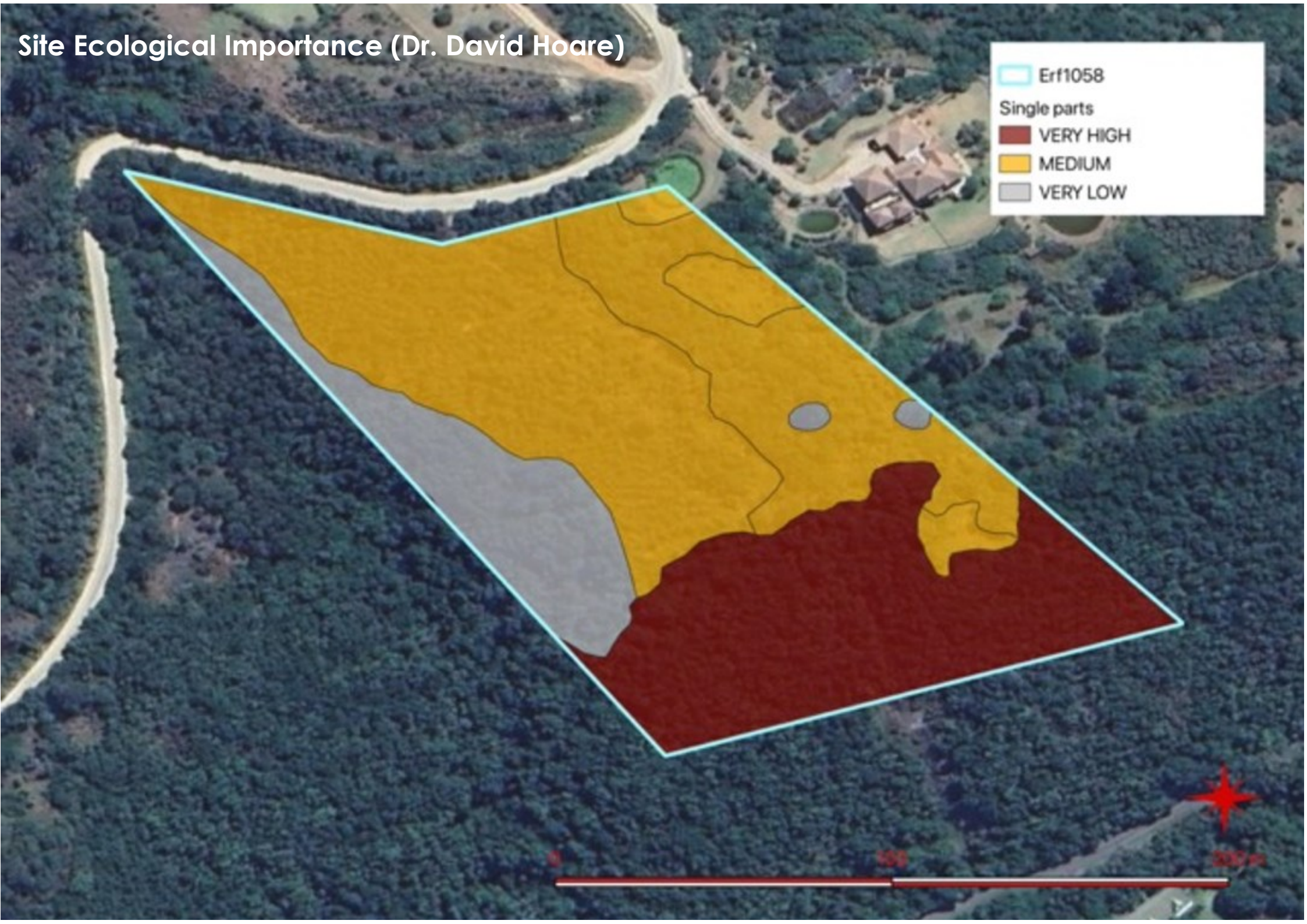


# Site Ecological Importance (Dr. David Hoare)

Erf1058

Single parts

- VERY HIGH
- MEDIUM
- VERY LOW



# Overlay of Site Sensitivity with Alternative A and B (Dr. David Hoare)

