



SITE PHOTOGRAPHS



1. Aerial view northwest from the southern boundary.



2. Aerial view southwest from the eastern boundary toward the reservoir.



3. Aerial view northeast from the reservoir.



4. Aerial view east from the reservoir.



5. Aerial view looking southwest over the property.



6. Aerial view looking south over the property.



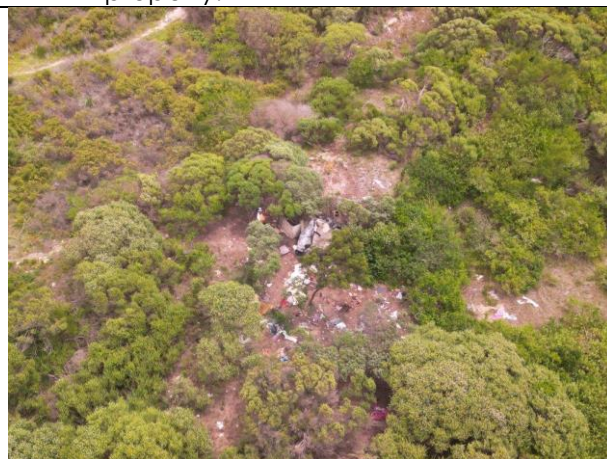
7. Aerial view looking southeast over the property.



8. Aerial view looking northeast over the property.



9. Aerial view looking north over the property.



10. Aerial view of illegal dumping on site.



11. Dense scrub and cleared areas (DSA).



12. Wetland vegetation observed between the shrubs (DSA).



13. Illegal sand mining and waste dumping on site (DSA).



14. Artificial Wetland A (Confluent Environmental).



15. Artificial Wetland B (Confluent Environmental).



16. Artificial Wetland A dominated by *Typha capensis* (SRK Consulting).



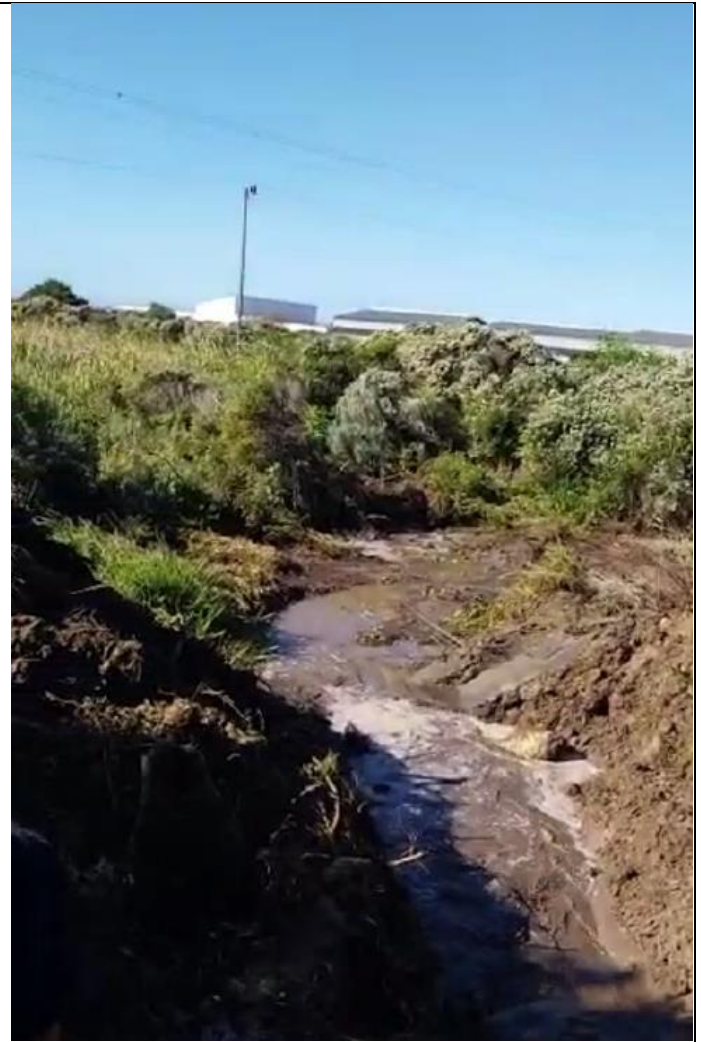
Example of sandy fynbos on site that has recently been brushcut but remains dominated by indigenous species (SRK Consulting).



Transformed areas dominated by the grasses such as *Cynodon dactylon*, a few alien species and rubble (SRK Consulting).



1. Leak to the west of Wetland A.



2. Leak to the west of Wetland A.



3. Excavations into calcrete (Confluent Environmental).



4. Excavations into calcrete (Confluent Environmental).



5. Vegetated stockpiles of excavated material around the perimeter of Wetland B (Confluent Environmental).



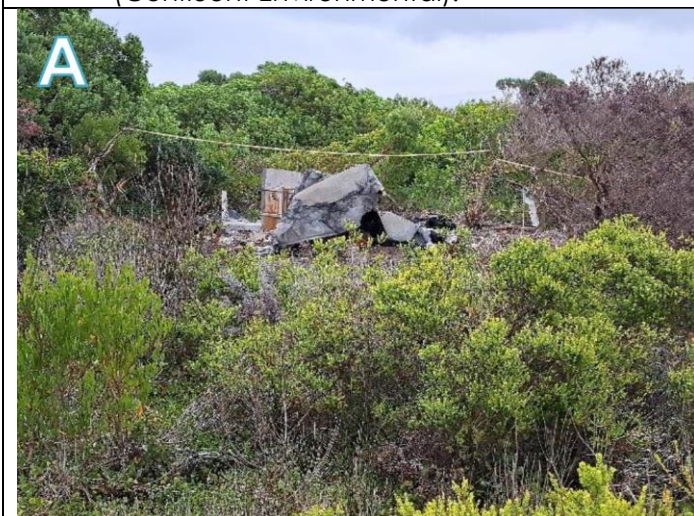
6. Vegetated stockpiles of excavated material around the perimeter of Wetland B (Confluent Environmental).



7. Vegetated stockpiles of excavated material around the perimeter of Wetland B (Confluent Environmental).



8. One of several small excavations vegetated with *T. capensis* and filled with solid waste and litter (Confluent Environmental).



9. Temporary shelters (Confluent Environmental).



10. Illegal dumping and littering (Confluent Environmental).