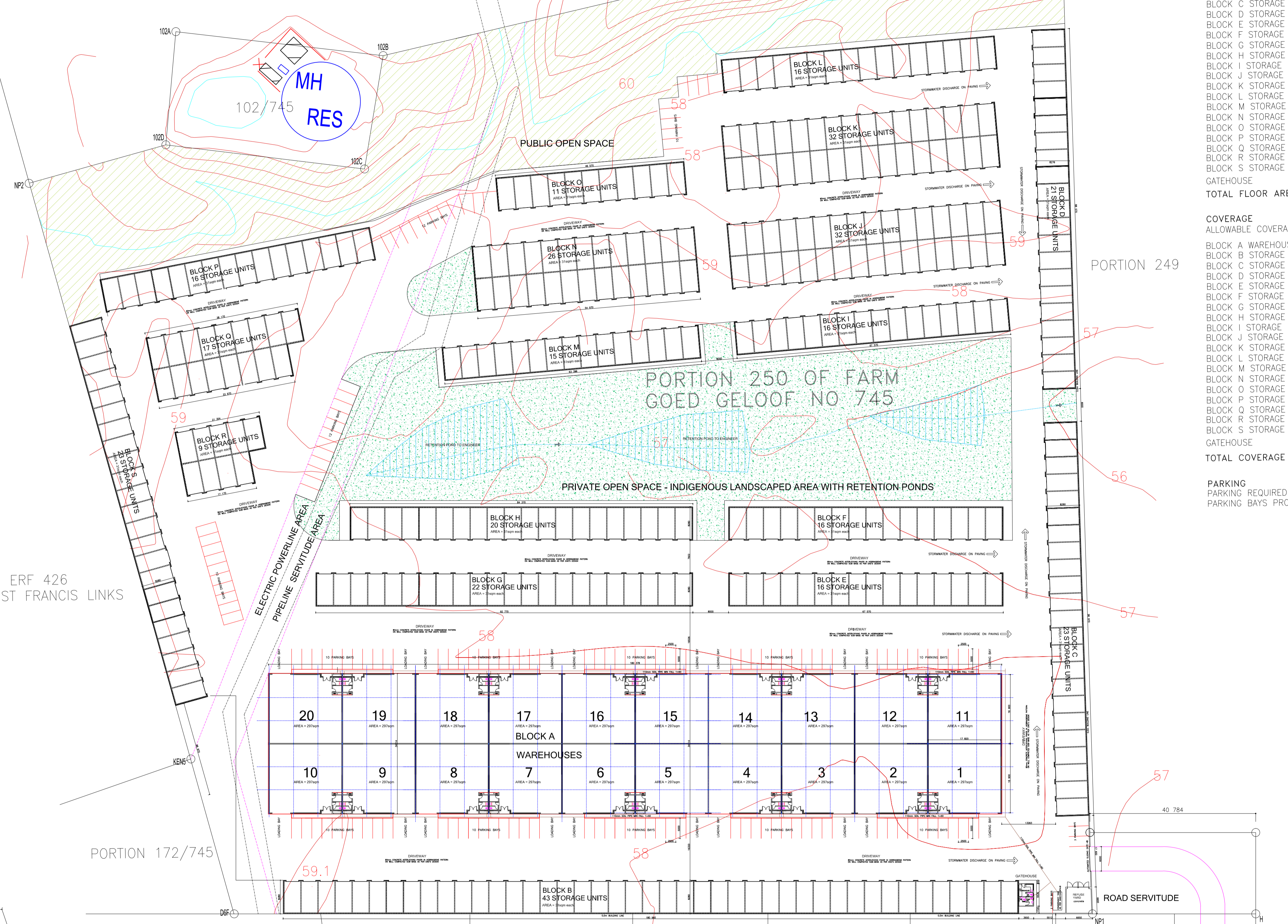


# ALTERNATIVE LAYOUT

PORTION 164/745

PORTION 248

REMAINDER



## AREA SCHEDULE

PORTION 250	=	5.1078 Ha
PIPELINE/POWER-LINE AREAS	=	0.2727 Ha
USABLE AREA	=	4.8351 Ha
ZONING: INDUSTRIAL ZONE 1		
BUILDING LINES: 0.0m		
HEIGHT RESTRICTION: 11.0m		

## BUILDINGS

<b>FLOOR AREA</b>		
BLOCK A WAREHOUSE UNITS (20)	=	5 940.00 sqm
BLOCK B STORAGE UNITS (43)	=	1 333.00 sqm
BLOCK C STORAGE UNITS (23)	=	713.00 sqm
BLOCK D STORAGE UNITS (21)	=	651.00 sqm
BLOCK E STORAGE UNITS (16)	=	496.00 sqm
BLOCK F STORAGE UNITS (16)	=	496.00 sqm
BLOCK G STORAGE UNITS (22)	=	682.00 sqm
BLOCK H STORAGE UNITS (20)	=	620.00 sqm
BLOCK I STORAGE UNITS (16)	=	496.00 sqm
BLOCK J STORAGE UNITS (32)	=	992.00 sqm
BLOCK K STORAGE UNITS (32)	=	992.00 sqm
BLOCK L STORAGE UNITS (16)	=	496.00 sqm
BLOCK M STORAGE UNITS (15)	=	465.00 sqm
BLOCK N STORAGE UNITS (26)	=	806.00 sqm
BLOCK O STORAGE UNITS (11)	=	341.00 sqm
BLOCK P STORAGE UNITS (16)	=	496.00 sqm
BLOCK Q STORAGE UNITS (17)	=	527.00 sqm
BLOCK R STORAGE UNITS (9)	=	279.00 sqm
BLOCK S STORAGE UNITS (23)	=	713.00 sqm
GATEHOUSE	=	15.75 sqm
<b>TOTAL FLOOR AREA</b>	=	<b>17 549.75sqm</b>

## COVERAGE

ALLOWABLE COVERAGE = 75%	=	38 308.50 sqm
<b>BLOCK A WAREHOUSE UNITS (20)</b>	=	<b>6 224.80 sqm</b>
BLOCK B STORAGE UNITS (43)	=	1 498.00 sqm
BLOCK C STORAGE UNITS (23)	=	802.91 sqm
BLOCK D STORAGE UNITS (21)	=	733.36 sqm
BLOCK E STORAGE UNITS (16)	=	559.48 sqm
BLOCK F STORAGE UNITS (16)	=	559.48 sqm
BLOCK G STORAGE UNITS (22)	=	768.13 sqm
BLOCK H STORAGE UNITS (20)	=	698.58 sqm
BLOCK I STORAGE UNITS (16)	=	559.48 sqm
BLOCK J STORAGE UNITS (32)	=	1 118.95 sqm
BLOCK K STORAGE UNITS (32)	=	1 118.95 sqm
BLOCK L STORAGE UNITS (16)	=	559.48 sqm
BLOCK M STORAGE UNITS (15)	=	524.92 sqm
BLOCK N STORAGE UNITS (26)	=	910.30 sqm
BLOCK O STORAGE UNITS (11)	=	385.60 sqm
BLOCK P STORAGE UNITS (16)	=	559.48 sqm
BLOCK Q STORAGE UNITS (17)	=	597.32 sqm
BLOCK R STORAGE UNITS (9)	=	318.97 sqm
BLOCK S STORAGE UNITS (23)	=	802.91 sqm
GATEHOUSE	=	20.10 sqm
<b>TOTAL COVERAGE</b>	=	<b>19 321.20sqm</b>
	=	<b>50.4%</b>

<b>PARKING</b>		
PARKING REQUIRED 1/200sqm FS	=	88 BAYS
PARKING BAYS PROVIDED	=	150 BAYS

KOUGA MUNICIPALITY

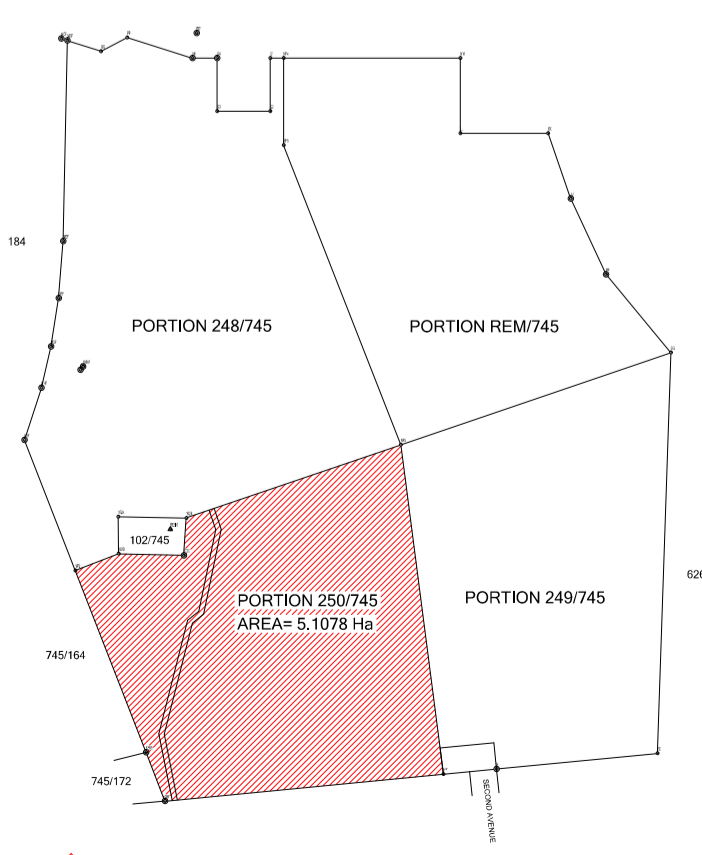
NO	REVISIONS	DATE	BY
----	-----------	------	----

**PROJECT:**  
**NEW WAREHOUSE AND STORAGE FACILITY**  
 PORTION 250 OF THE FARM GOED GELOOF NO 745 - HUMANSDORP DISTRICT FOR FOR P HILL

**TITLE:**  
**SITE DEVELOPMENT PLAN**

SCALE	1:1250	DRAWN	PJ
DATE	OCT 22	REVISION NO	
DRAWING NO.	5830 - SDP2		

**ARCHITECTS + URBAN DESIGNERS**  
 P/4 DA QAMA ROAD  
 CAPE ST FRANCIS  
 EASTERN CAPE  
**PHILIP JANKES**  
 CELL: 082 448 9898 E-MAIL: jankes@worldonline.co.za  
 PROFESSIONAL ARCHITECT SACAP REGISTRATION NO: 2263  
 PROFESSIONAL INDEMNITY: AON POLICY NO: 25021/J0080



**SITE PLAN**  
 SCALE: 1=1250



THIS DRAWING IS COPYRIGHT RESERVED AND REMAINS THE PROPERTY OF JANKES + ASSOCIATES