



Critical Biodiversity Area

Legend

- Farm Portions
- Erf
- BSP CBA**
- CBA: Terrestrial
- CBA: Forest
- CBA: River
- CBA: Estuary
- CBA: Wetland

Map Center: Lon: 22°35'53.5"E
Lat: 33°59'26.9"S

Scale: 1:9 028

Date created: September 19, 2022



**Western Cape
Government**

FOR YOU

Agriculture

Surveyor General WC, Department of Rural Development and Land Affairs
Chief Surveyor-General (DRDLR)
East-South Africa, Esri, HERE, Garmin
Department of Rural Development and Land Reform
1/17/22



Ecosystem Threat Status

Legend

Farm Portions

Erf

Ecosystem Threat Status 2016

Status

CR

EN

LT

VU

Map Center: Lon: 22°35'53.5"E
Lat: 33°59'26.9"S

Scale: 1:9 028

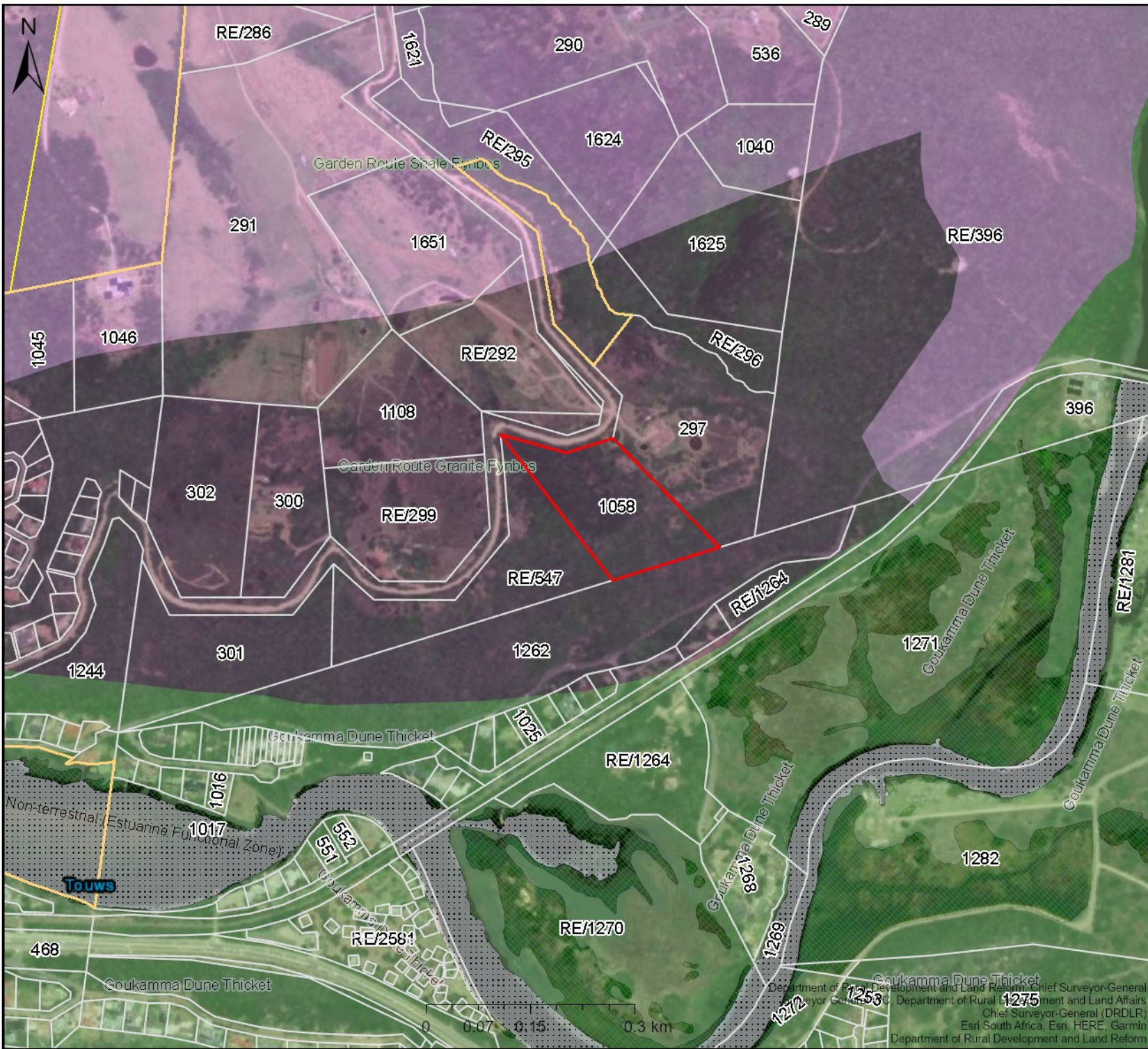
Date created: September 19, 2022



**Western Cape
Government**
FOR YOU

Agriculture

Surveyor General WC, Department of Rural Development and Land Affairs
Chief Surveyor-General (DRDLR)
Esri South Africa, Esri, HERE, Garmin
Department of Rural Development and Land Reform
Maxar



GARDEN ROUTE GRANITE FYNBOS

Legend

-  Parent Farms
-  Farm Portions
-  Erf

VEGMAP 2018

-  Estuary
-  AT 36 Goukamma Dune Thicket
-  Thicket
-  FFg 5 Garden Route Granite Fynbos
-  FFh 9 Garden Route Shale Fynbos

Map Center: Lon: 22°35'55.3"E
Lat: 33°59'23.1"S

Scale: 1:9 028

Date created: August 8, 2023



Western Cape Government

FOR YOU

Agriculture

Department of Rural Development and Land Reform, Chief Surveyor-General
 Department of Rural Development and Land Affairs, Chief Surveyor-General (DRDLR)
 Esri South Africa, Esri, HERE, Garmin
 Department of Rural Development and Land Reform

Protected Area

Legend

-  Farm Portions
-  Erf
-  BSP Protected Areas



Map Center: Lon: 22°35'54.1"E
Lat: 33°59'29.4"S

Scale: 1:18 056

Date created: September 19, 2022



Wetlands

Legend

Farm Portions

Erf

Wetlands (NFEPA)

Estuaries

Natural

Map Center: Lon: 22°35'53.5"E
 Lat: 33°59'26.9"S

Scale: 1:9 028

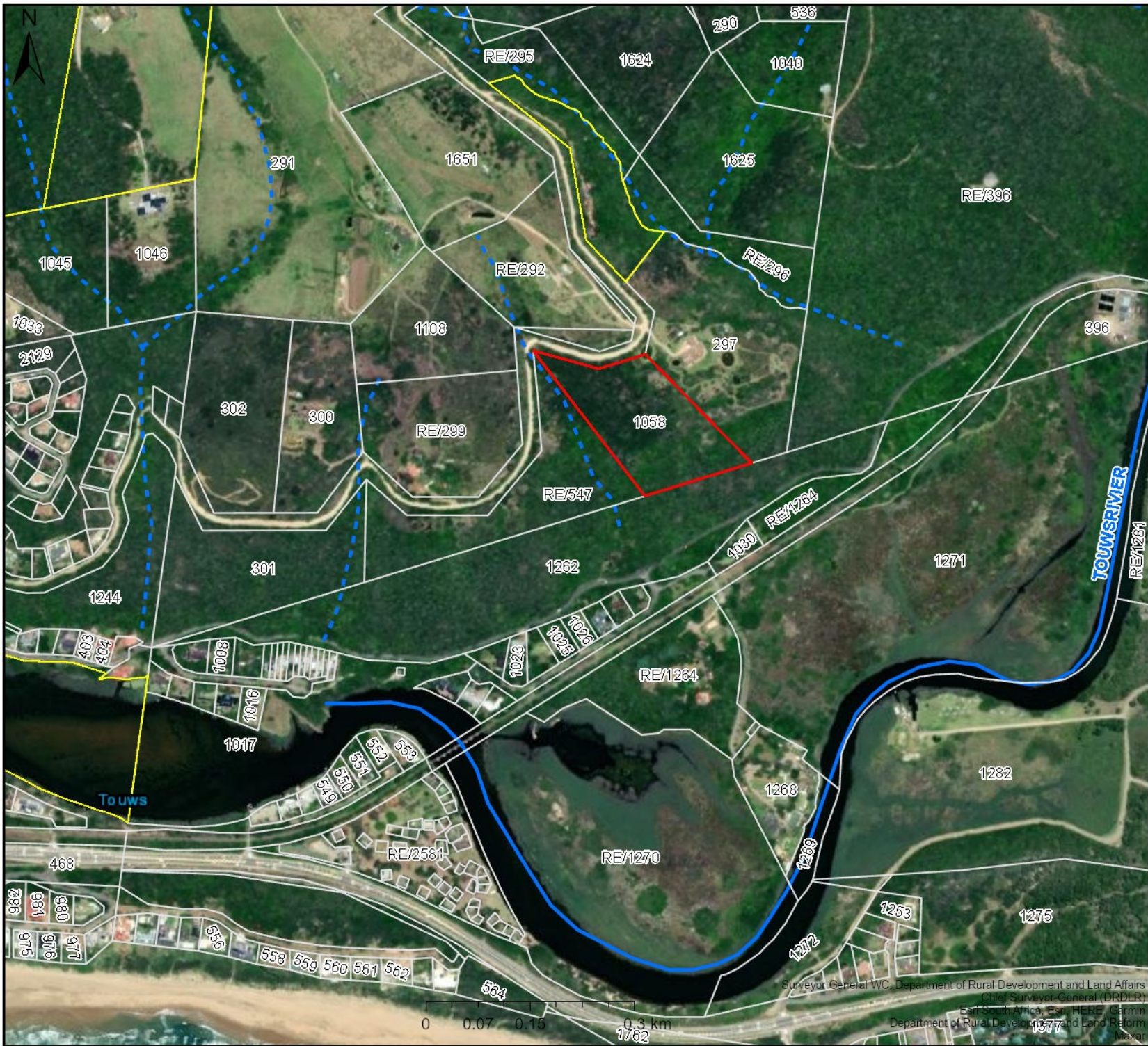
Date created: September 19, 2022



**Western Cape
 Government**
FOR YOU

Agriculture

Surveyor General WC, Department of Rural Development and Land Affairs
 Chief Surveyor-General (DRDLR)
 East: South Africa, East: HERE, Garmin
 Department of Rural Development and Land Reform
 Maxar



Rivers NGI

Legend

Farm Portions

Erf

Rivers

Perennial

Non-Perennial

Map Center: Lon: 22°35'53.5"E
Lat: 33°59'26.9"S

Scale: 1:9 028

Date created: September 19, 2022



**Western Cape
Government**

FOR YOU

Agriculture

Surveyor General WC, Department of Rural Development and Land Affairs
Chief Surveyor-General (DRDLR)
Erf South Africa, Erf HERE, Garmin
Department of Rural Development and Land Reform
11377

