

# ERF 66 & 67 FARM 443, PLETTENBERG BAY

## Legend

### BSP ESA

ESA: Terrestrial

### BSP CBA

CBA: Terrestrial



Map Center: Lon: 23°22'11.3"E  
Lat: 34°5'23.8"S

Scale: 1:9 028

Date created: September 19, 2022



Western Cape  
Government

FOR YOU

Agriculture



# ERF 66 & 67 FARM 443, PLETTENBERG BAY


## Legend


 Farm Portions

 Erf

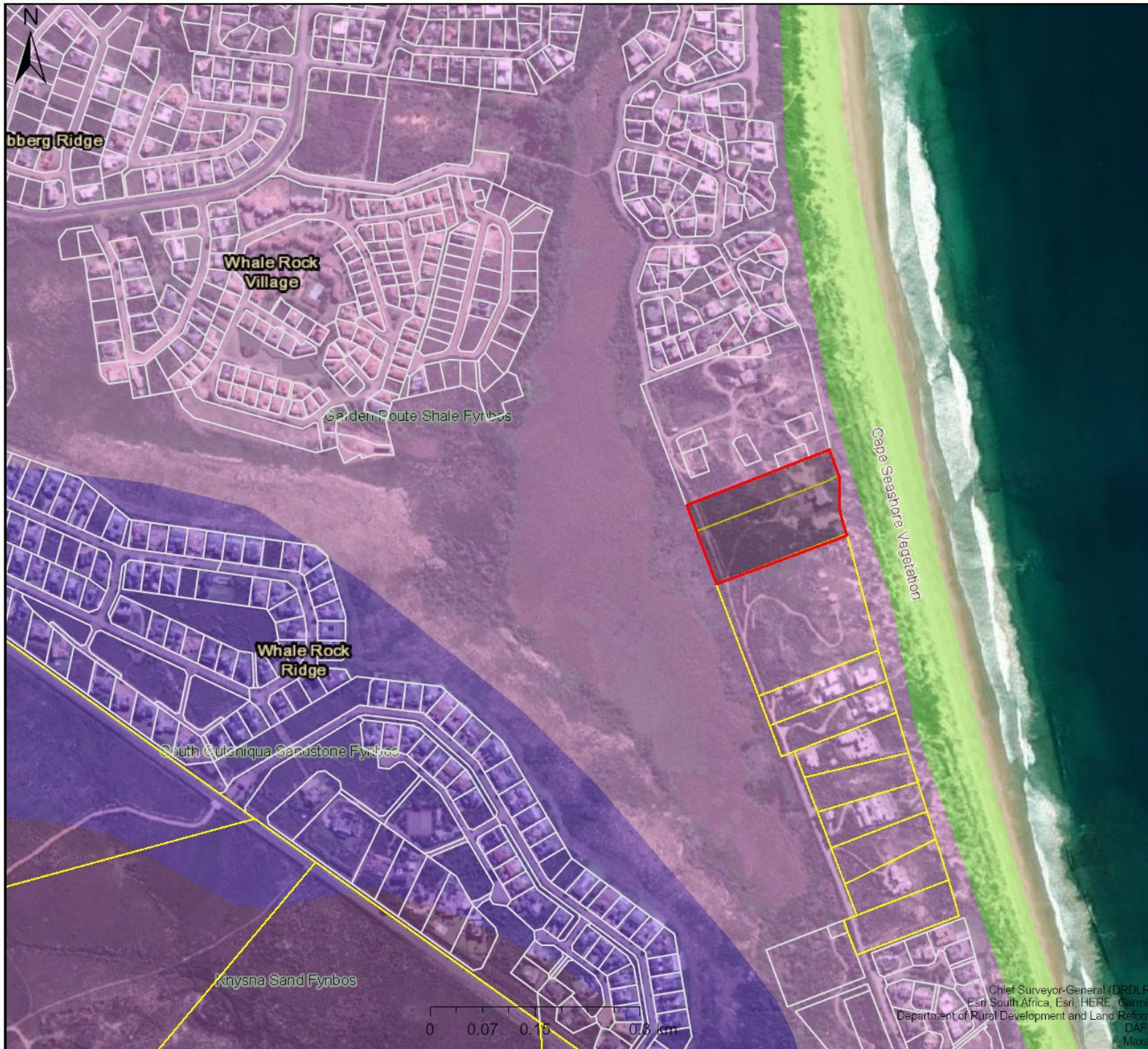
## VEGMAP 2012

 FFs 19 South Outeniqua Sandstone Fynbos

 FFd 10 Knysna Sand Fynbos

 FFh 9 Garden Route Shale Fynbos

 AZd 3 Cape Seashore Vegetation



**Map Center:** Lon: 23°22'2.4"E  
Lat: 34°5'24.5"S

**Scale:** 1:9 028

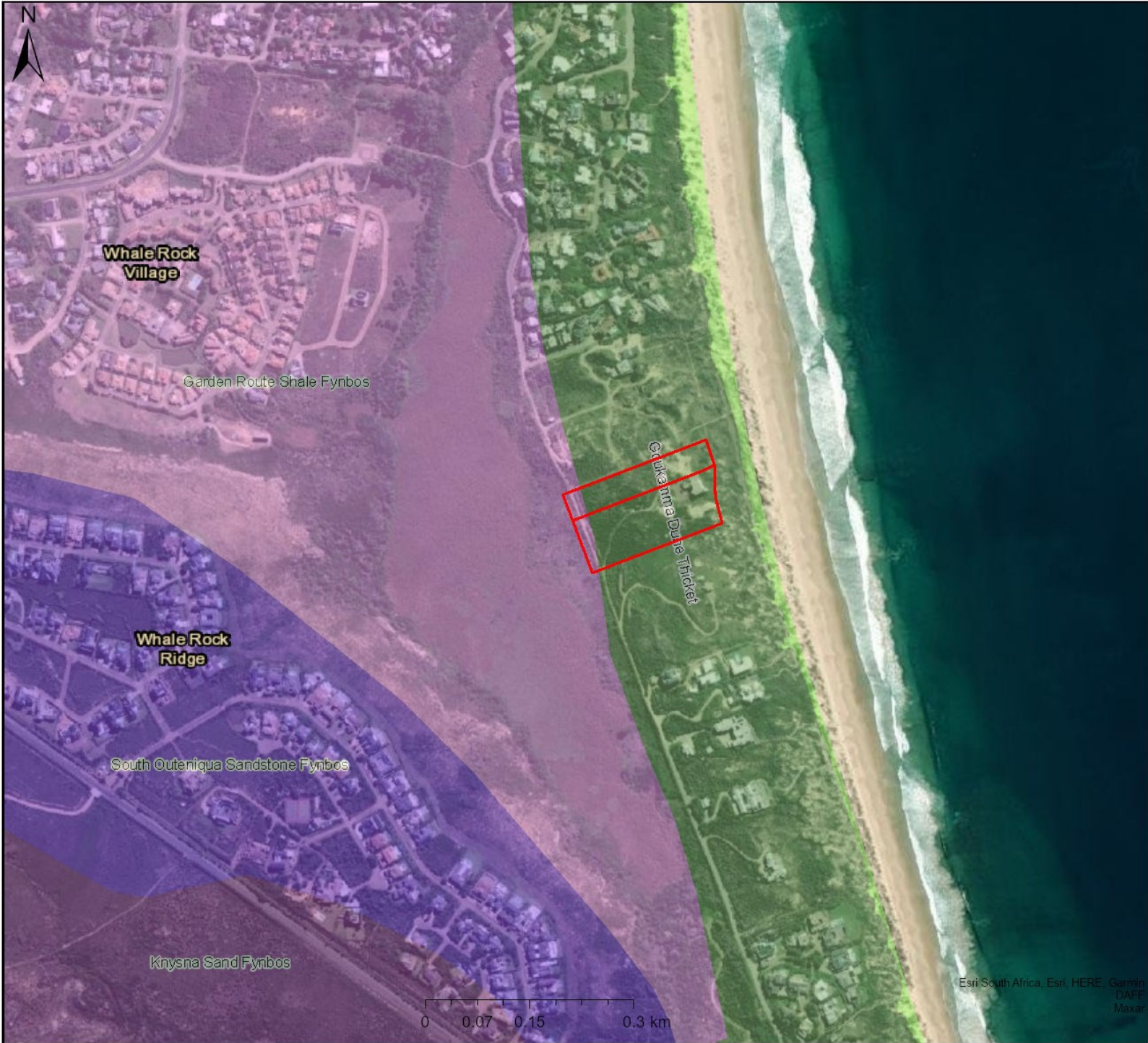
**Date created:** October 11, 2022



**Western Cape  
Government**  
**FOR YOU**

Agriculture





# ERF 66 & 67 FARM 443, PLETTENBERG BAY

### Legend

#### VEGMAP 2018

- AT 36 Goukamma Dune Thicket
- AZd 3 Cape Seashore Vegetation
- FFd 10 Knysna Sand Fynbos
- FFh 9 Garden Route Shale Fynbos
- FFs 19 South Outeniqua Sandstone Fynbos

**Map Center:** Lon: 23°22'8.9"E  
Lat: 34°5'24.8"S

**Scale:** 1:9 028

**Date created:** September 19, 2022

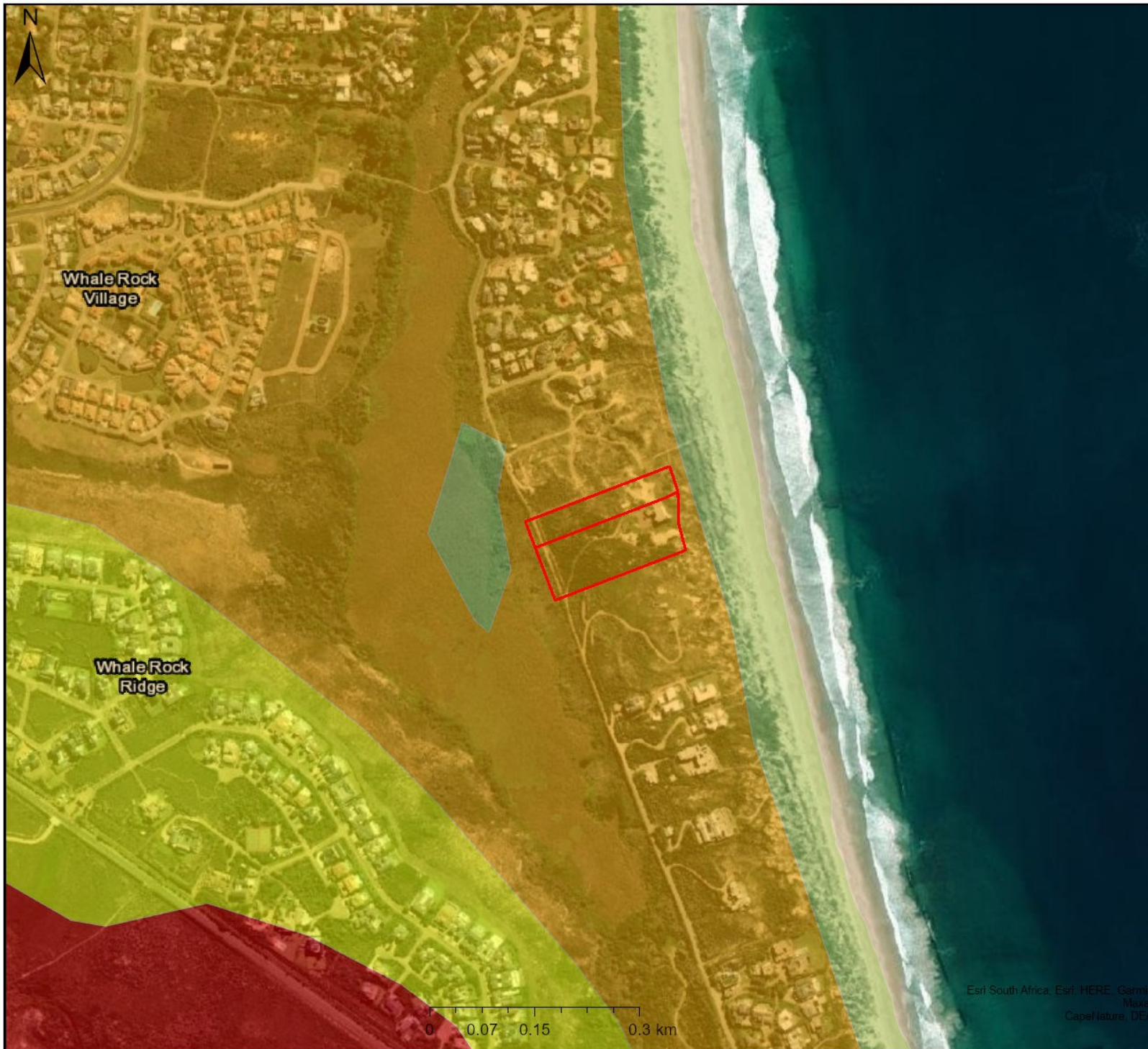


**Western Cape  
Government**  
FOR YOU

Agriculture

Esri South Africa, Esri, HERE, Garmin, DeLorme, NAVTEQ, Swatch 95, Unigis, U.S. Geological Survey, AeroGRID, IGN, Esri, Mapbox, Swatch 95, Unigis, U.S. Geological Survey, AeroGRID, IGN, Esri, Mapbox





# ERF 66 & 67 FARM 443, PLETTENBERG BAY

Legend

Ecosystem Threat Status 2016

Status

- CR
- EN
- LT
- VU

**Map Center:** Lon: 23°22'11.3"E  
Lat: 34°5'23.8"S

**Scale:** 1:9 028

**Date created:** September 19, 2022

Esri South Africa, Esri, HERE, Garmin  
Maxar  
CapeNature, DEA



**Western Cape  
Government**

**FOR YOU**

Agriculture