



Goedehoop
PO Box 769
Upington
8800

082 785 9637
andre@waterpointgw.co.za
www.waterpointgw.co.za

Potential Study to Identify Drilling Targets for Groundwater Development for Portion 12, 15 and 17 of Redford 232, Knysna, Western Cape 14 June 2021

*Prepared for Denina Bernard
Prepared by André Gerber (MSc
Hydrogeology)*

*Hydrogeologist - Director
Waterpoint Groundwater Exploration*

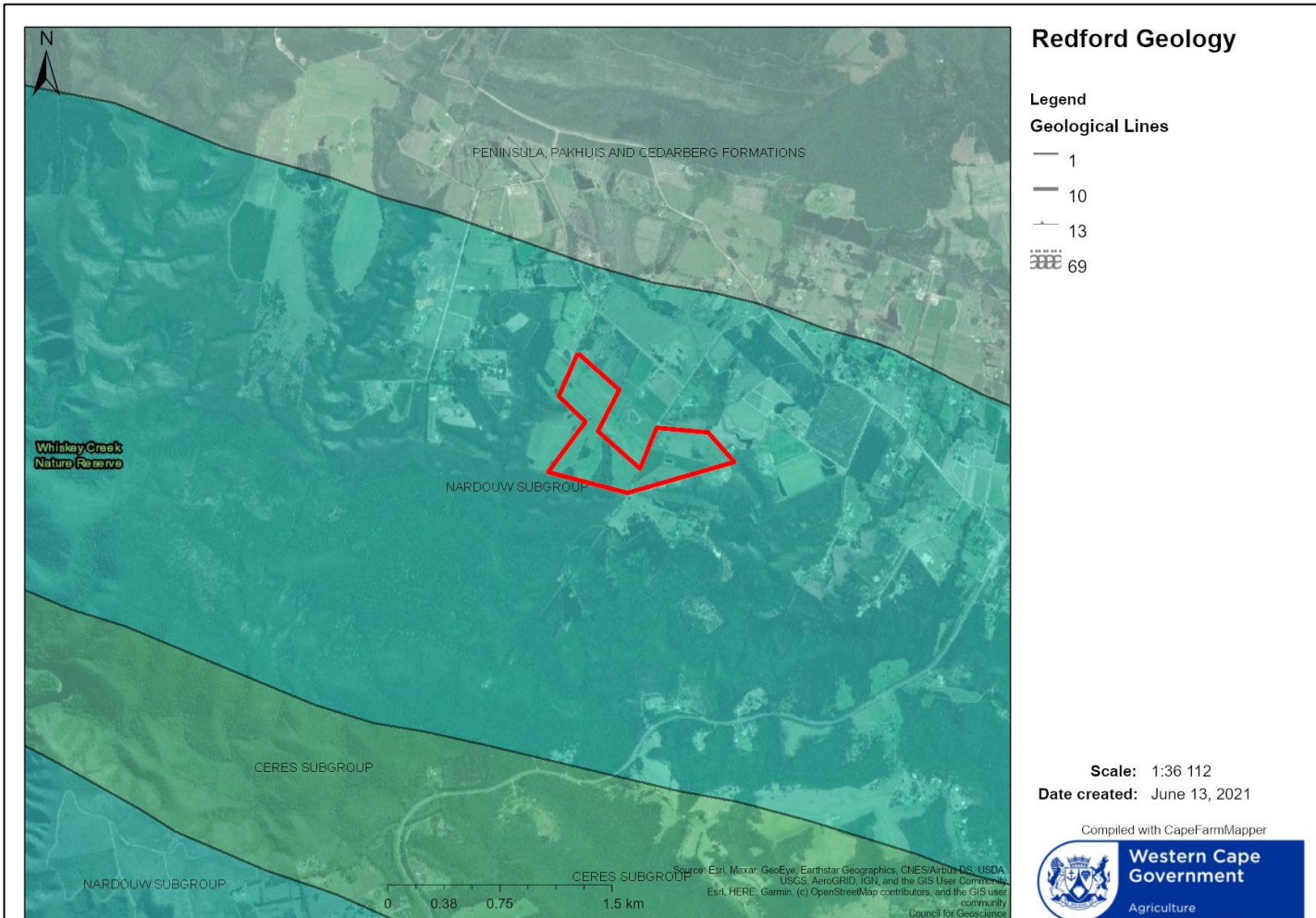


Figure 1. Geology of the farm. The farm is underlain by sandstones and quartzites of the Nardouw Subgroup which form part of the Table Mountain Group.

Groundwater Potential

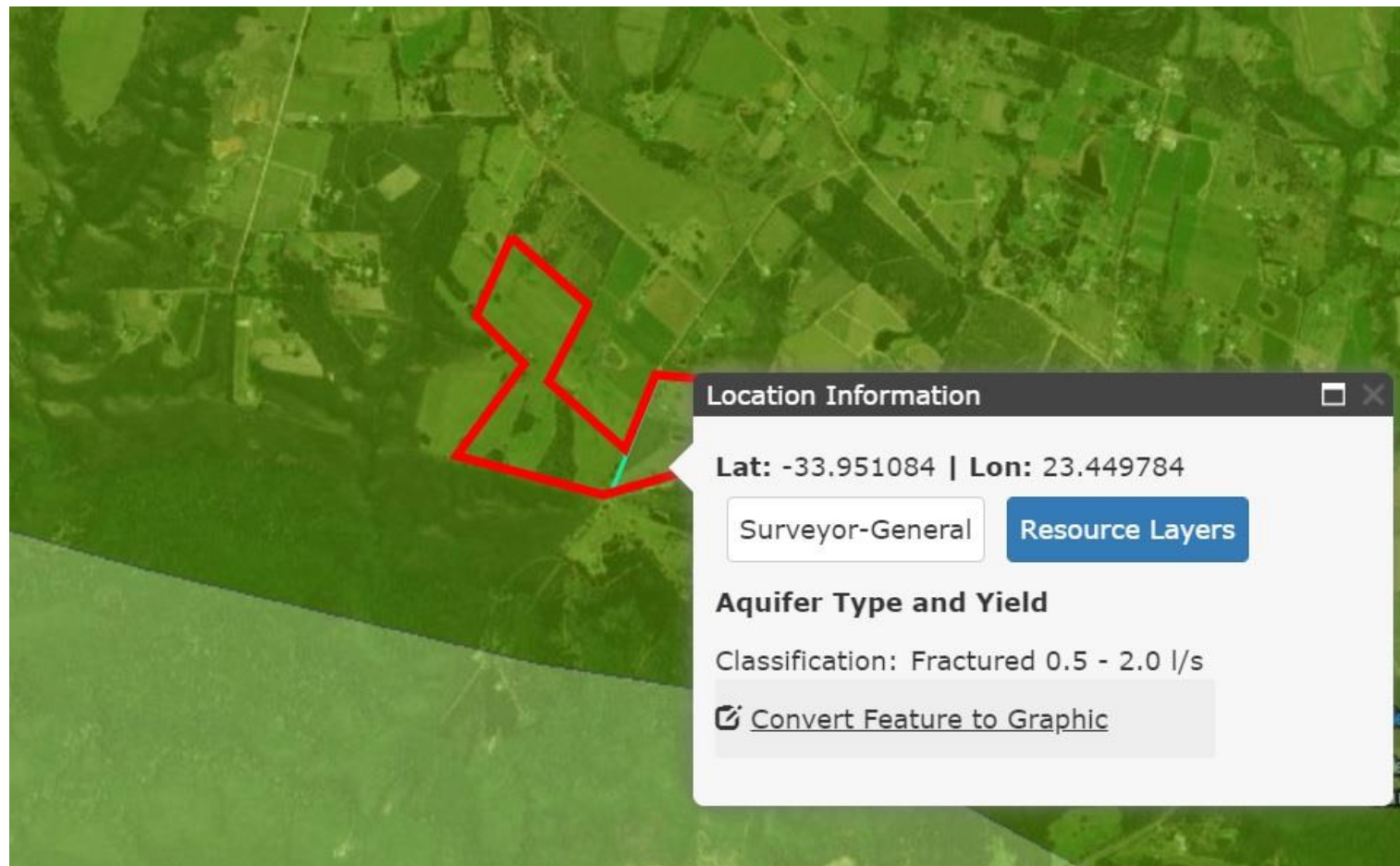


Figure 2. Average borehole yields for the area vary between 0.5 l/s and 2.0 l/s. Groundwater occur in fractures adjacent to geological structures , bedding planes and geological contacts. Water qualities are expected to be moderate (EC between 150 Ms/m and 370 Ms/m).

Proposed Geophysical Survey

- We propose ground geophysical surveys to identify drilling positions.
- Magnetic and subsequent Telluric surveys are proposed.
- Geological contacts, structures and fractures will be targeted.



Figure 3. Proposed geophysical survey lines

Quote

Item	Distance	Cost
Magnetic Surveys Lines	1.5km	R7 500
Telluric Follow up lines	200m	R4 000
Travel (from Port Elizabeth)	400km	R2 000
		R13 500

Team members:

Albert van Heerden - M.Sc. Hydrogeology (Institute for Groundwater Studies – University of the Free State)

André Gerber - M.Sc. Hydrogeology (Institute for Groundwater Studies – University of the Free State)

Ferdi de Bruyn – M.Sc. Environmental Geology (University of the Free State)

This document is issued for the party which commissioned it and for specific purposes connected with the above-captioned project only. It should not be relied upon by any other party or used for any other purpose.

We accept no responsibility for the consequences of this document being relied upon by any other party, or being used for any other purpose, or containing any error or omission which is due to an error or omission in data supplied to us by other parties.

This document contains confidential information and proprietary intellectual property. It should not be shown to other parties without consent from us and from the party which commissioned it.

Directors: Ferdi de Bruyn, André Gerber, Albert van Heerden



Disclosure

It is suggested to follow the drilling process closely to accurately determine expected depths as indicated herein. **It is also recommended you keep me, as hydrogeologist, informed during the drilling. As drilling information is communicated to me, I may advise on different drilling depths as indicated herein.**

While every effort will be made during the fieldwork phase of this investigation to identify the locations with highest potential for groundwater, it is impossible to guarantee that the driller will intersect water and therefore we wish to reiterate that the cost for this survey and the cost of the drilling remains the client's risk. As such and in the event of an unsuccessful drilling operation, both Waterpoint Groundwater Exploration and myself in personal capacity can not be held responsible.

André Gerber (Pr.Sci.Nat)

Hydrogeologist

Director

Waterpoint Groundwater Exploration

