

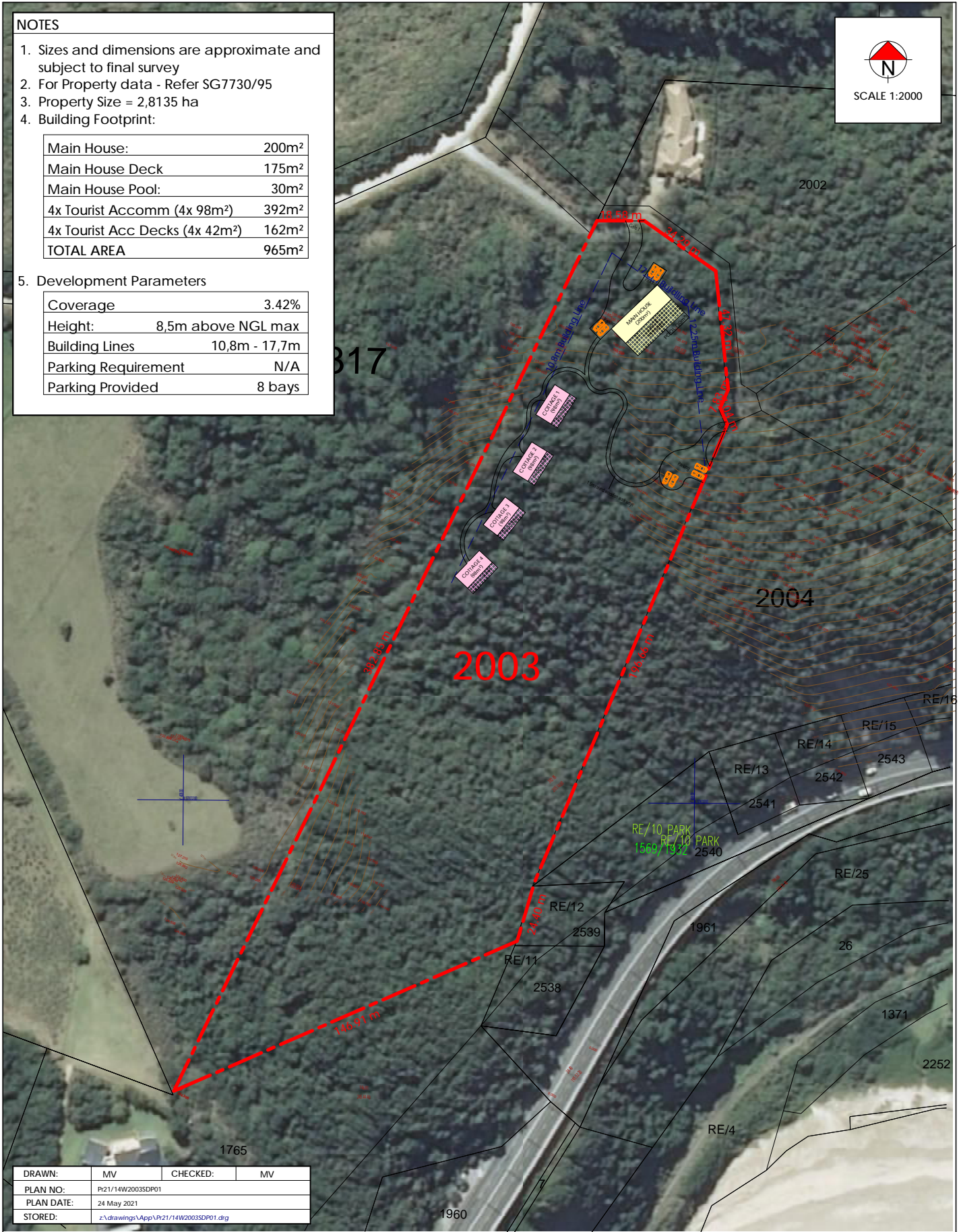
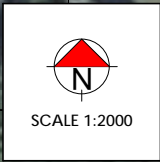
**NOTES**

1. Sizes and dimensions are approximate and subject to final survey
2. For Property data - Refer SG7730/95
3. Property Size = 2,8135 ha
4. Building Footprint:

Main House:	200m <sup>2</sup>
Main House Deck	175m <sup>2</sup>
Main House Pool:	30m <sup>2</sup>
4x Tourist Accom (4x 98m <sup>2</sup> )	392m <sup>2</sup>
4x Tourist Acc Decks (4x 42m <sup>2</sup> )	162m <sup>2</sup>
<b>TOTAL AREA</b>	<b>965m<sup>2</sup></b>

5. Development Parameters

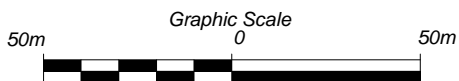
Coverage	3.42%
Height:	8,5m above NGL max
Building Lines	10,8m - 17,7m
Parking Requirement	N/A
Parking Provided	8 bays



DRAWN:	MV	CHECKED:	MV
PLAN NO:	P21/14W2003SDP01		
PLAN DATE:	24 May 2021		
STORED:	z:\drawings\App\VP21/14W2003SDP01.dwg		

**PLAN 2**

**SITE DEVELOPMENT PLAN  
(Preferred Alternative)**



**WILDERNESS ERF 2003**

21 Trotter Street, PO Box 2180  
KNYSNA 6570

(044) 382 0420  
086 459 2987  
e-mail: marike@vreken.co.za  
www.vreken.co.za